



Conveying Arctic Change in a Changing Communication Climate

Andrew @Revkin

@dotearth @nytopinion

Profound climatic, cultural, economic and strategic changes are under way



THE ARCTIC VOYAGERS.

WHAT DR. KANE HAS DISCOVERED.

THE NORTHERN MEN IN TOWN.

THE VESSELS AT THE NAVY-YARD.

Historical Outline of Arctic Enterprise and Discovery.

EARLY NORTHEAST VOYAGERS.

Sir Hugh Willoughby, Richard Chancellor, Henry Hudson.

Voyages and Discoveries of Scoresby, Ross, Parry, Beechey, Back, and others.

Discovery of the Northwest Passage by Capt. McClure.

THE AMERICAN EXPEDITIONS.

It is to be hoped that we shall not have many more Arctic Expeditions. The effort to discover a Northwest passage began in 1553, and was crowned with success in 1853. It has resulted in a great increase of human knowledge and the gratification of a wholesome curiosity. The commercial results, however, are nothing. And now that the "Passage" is discovered, and all who went out to seek it are known to be dead or are returned safely home, there are no sufficient inducements to tempt capital into these hyperborean regions, or to excuse daring ambition or gallant enterprise to brave its terrible dangers.

Profound climatic, cultural, economic and strategic changes are under way



The crew of the doomed Franklin expedition in an 1895 painting by William Thomas Smith. The men were trapped as they sought to navigate the Northwest Passage.

National Maritime Museum, Greenwich, London



The luxury ship Crystal Serenity, anchored off Nome, Alaska, in August, on its inaugural Northwest Passage voyage. “We had to look for ice rather than try to avoid it,” a passenger said.

Mark Thiessen | Associated Press

Science indicators explored in breakout later today:



At sea, ice retreats are novel at least back through 1850.

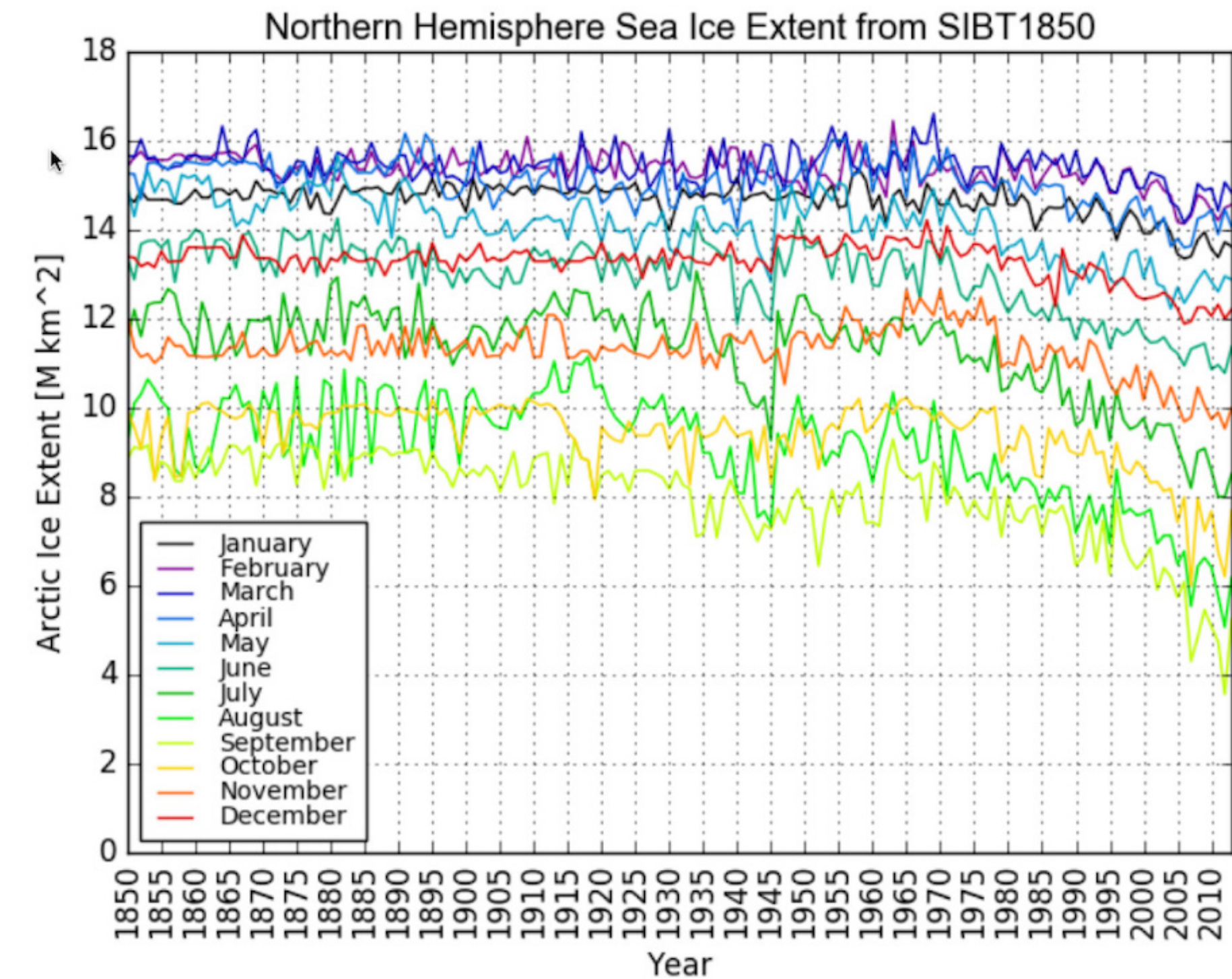
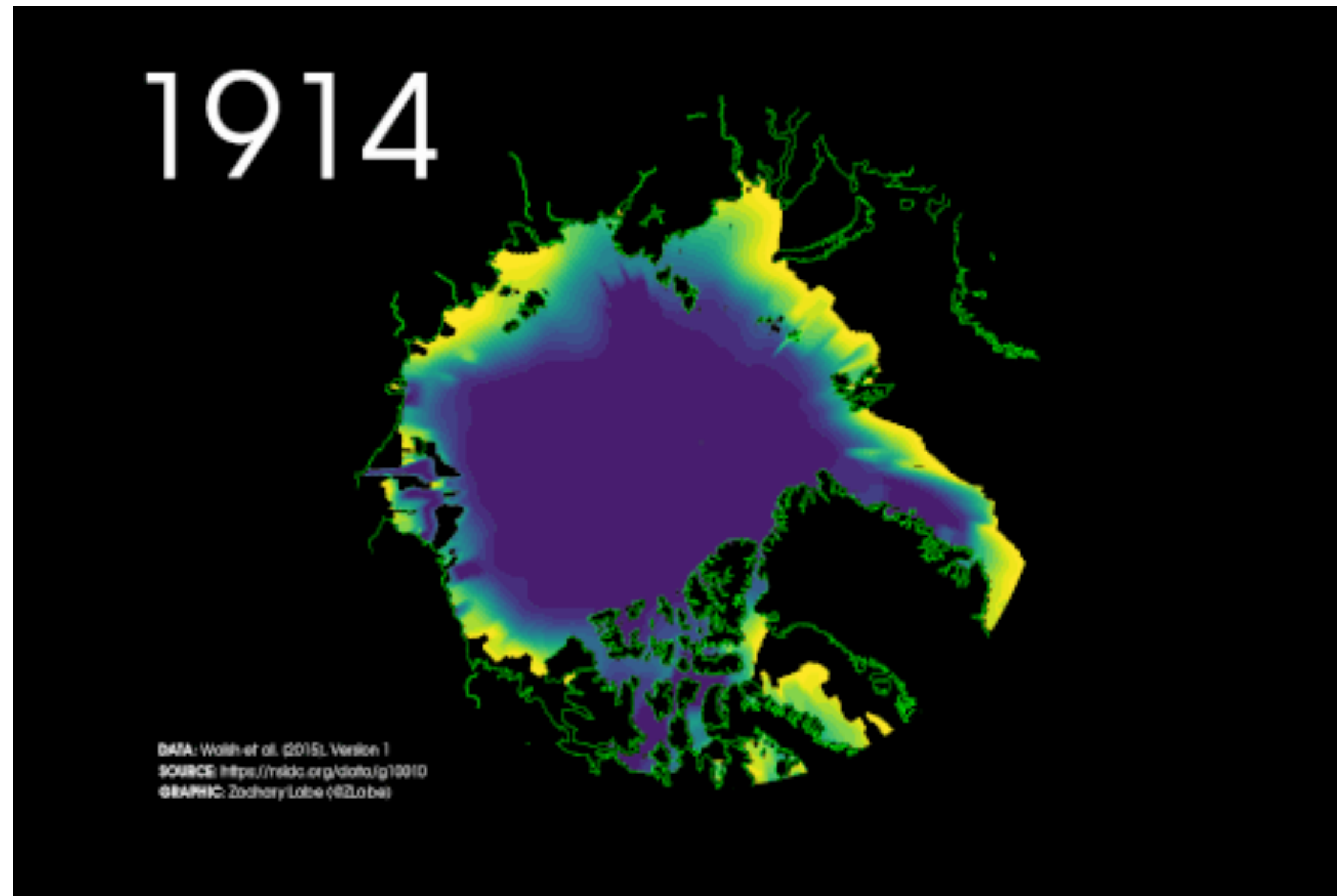


On land, a big thaw continues, producing surprises.

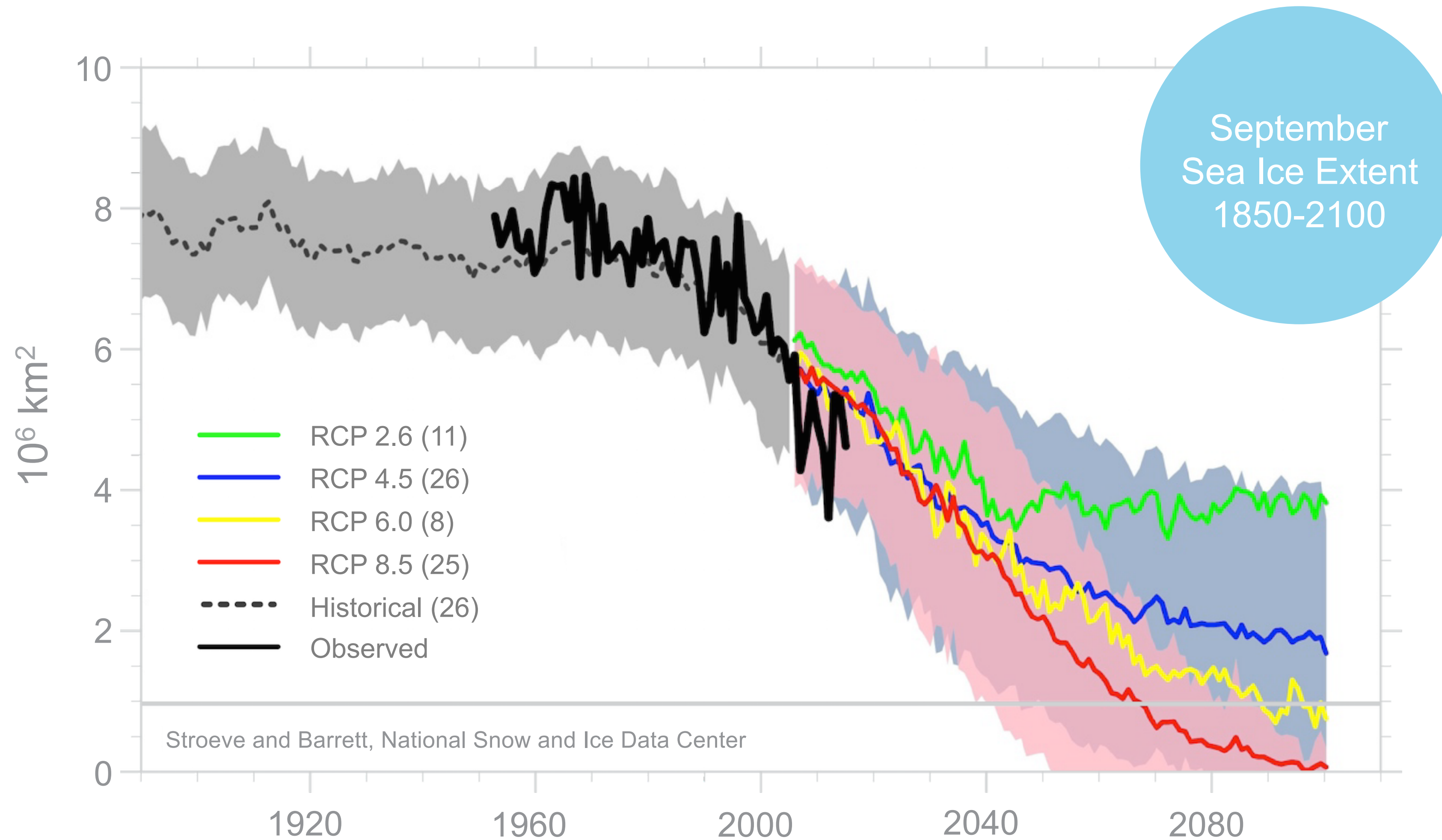


At global scale, all is interrelated.

Recent Sea Ice Retreats in Longer-term Context



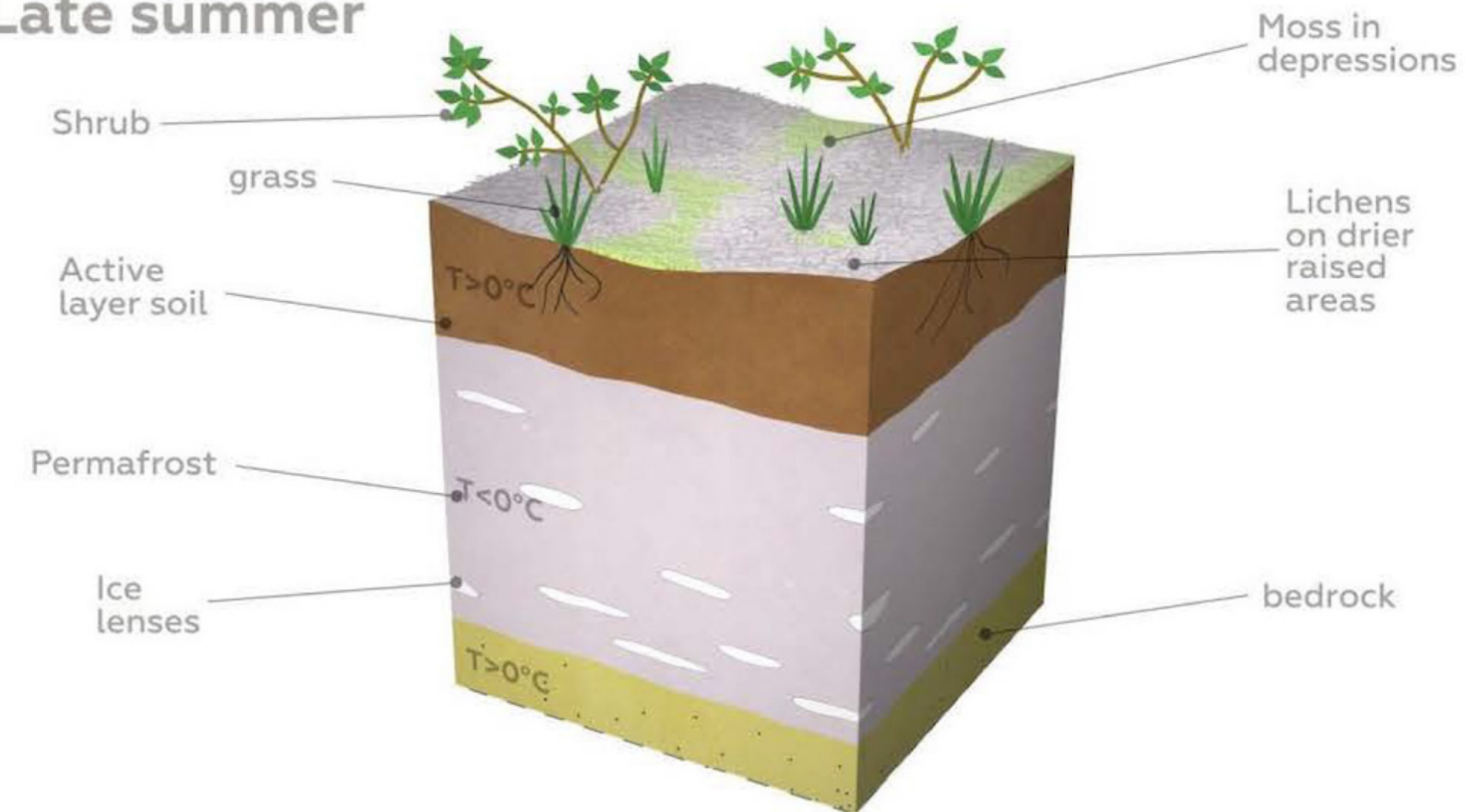
All Climate Models Forecast Loss of Summer Sea ice with Increasing GHGs



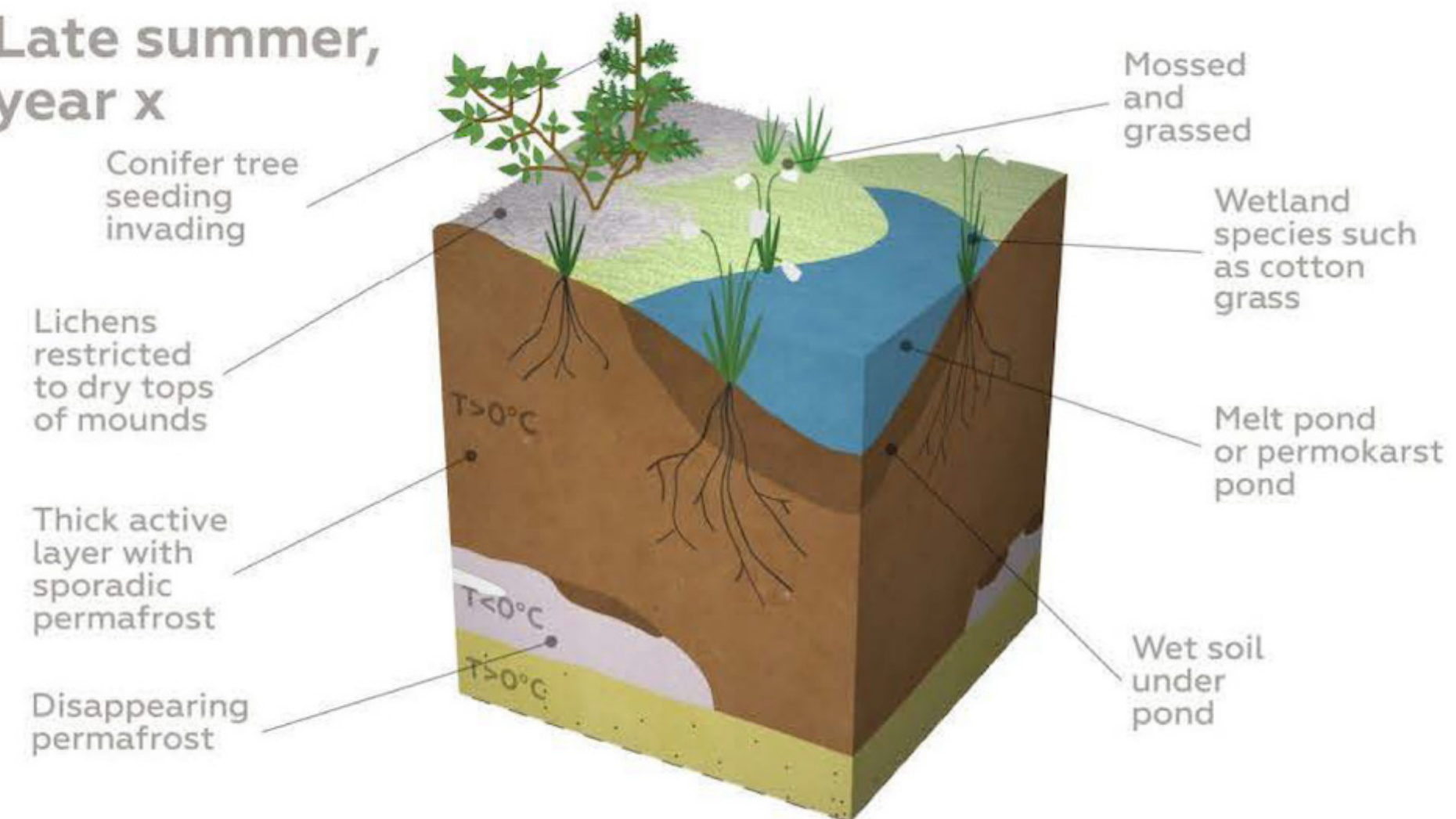


What happens
in warmer
climate?

Late summer

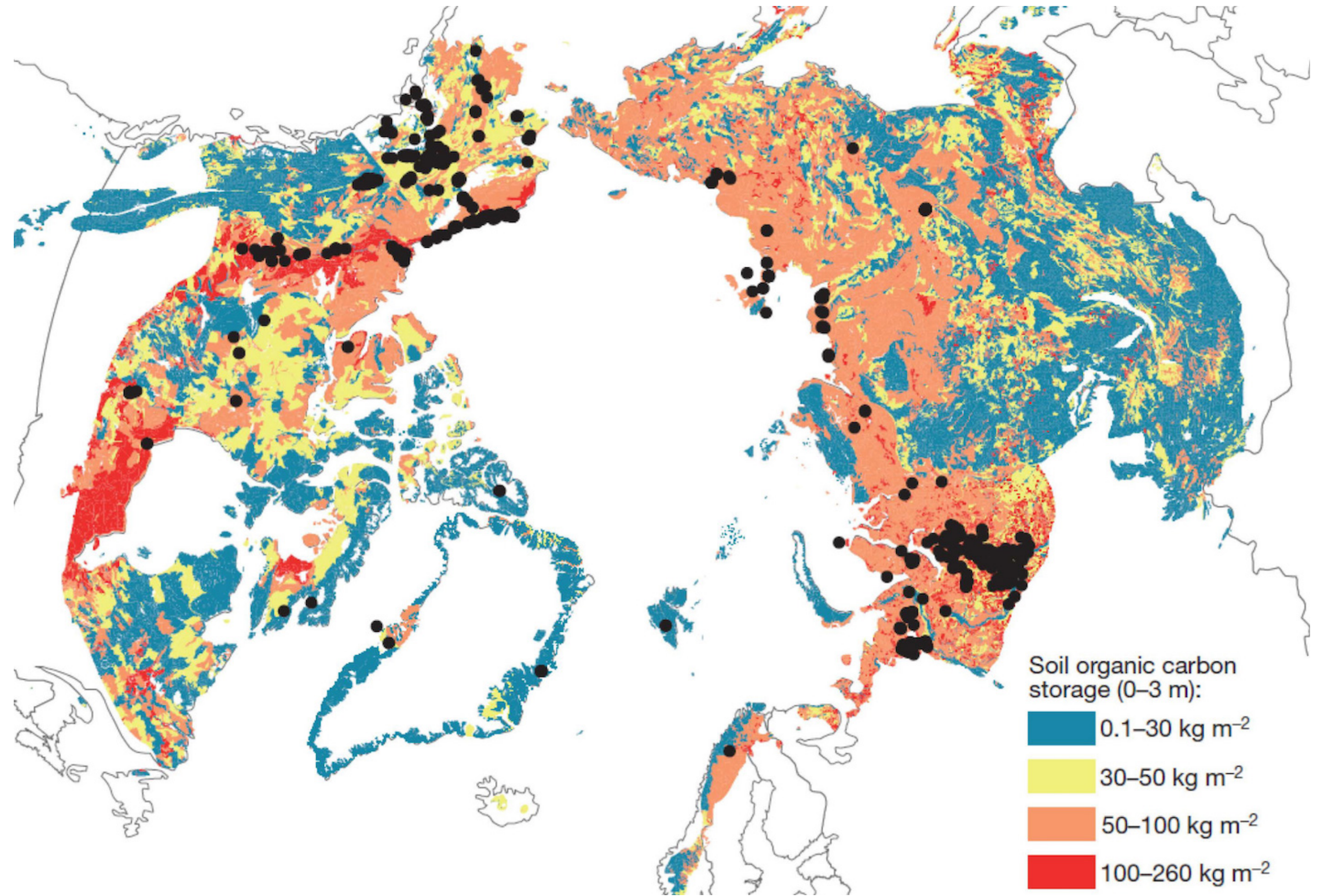


Late summer, year x





Why should
we care?



Polar Vortex – case study in new science generating headlines, and debate



The way forward is to think coupled and linked – not individual spheres (air, sea, or ice) in separation and not a separate the polar climate from the rest of the planet’s climate.

Thomas Spengler
Univ. of Bergen

 The Calgary Eyeopener, CBC radio one

Noise

#arcticsscience #iamascientistbecause #amy
#ipads @pelanzarestart #bbb11 #atos #ipads #nar
#manthropocene #farmhack @apenassignos #mupeng
#mupeng #narsiss #matilda #mediapace
#birdclass #cavs @pelanzarestart
@pelanzarestart

Signal

#arcticsscience

#iamascientistbecause

#manthropocene

#farmhack

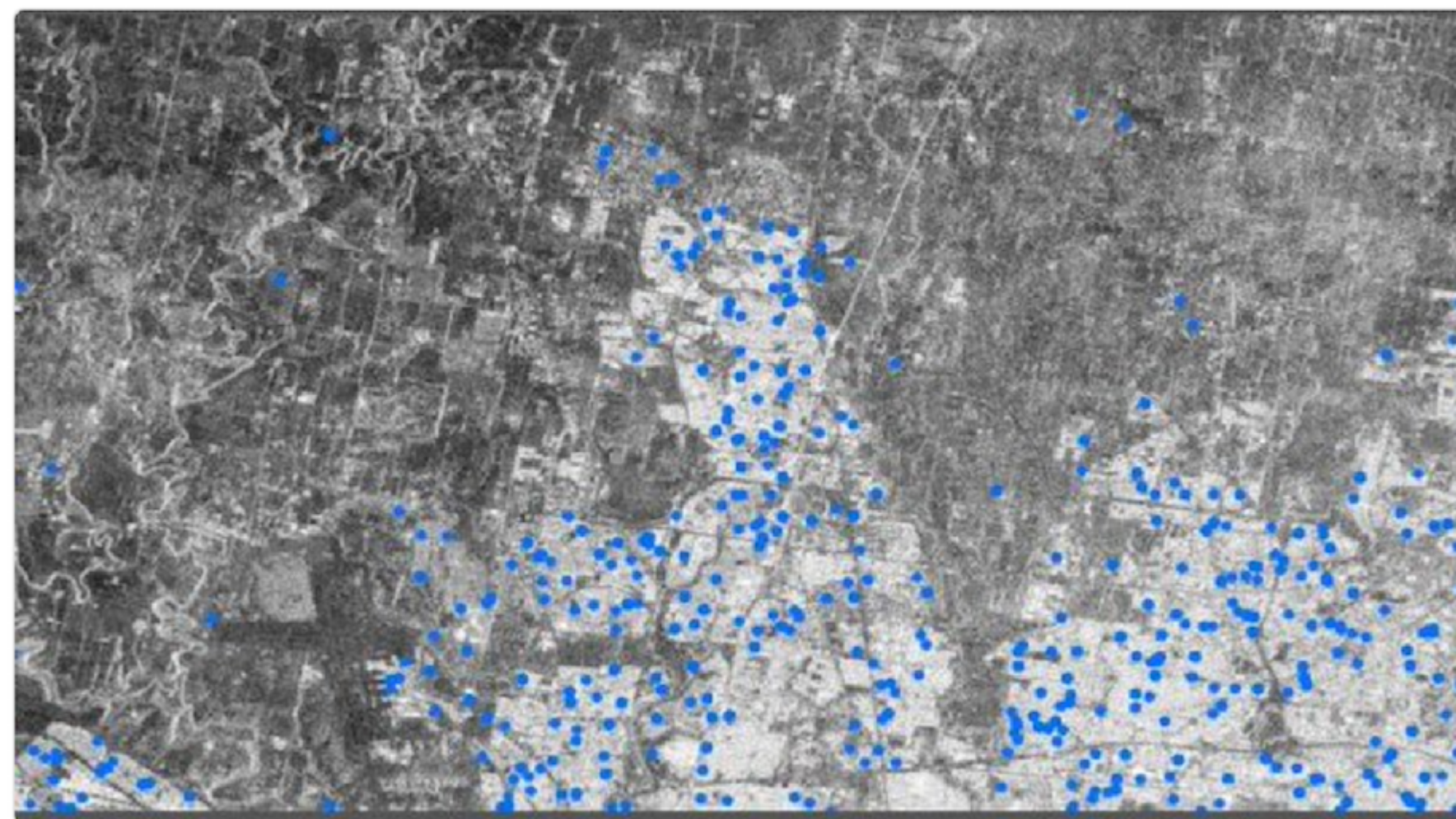
#birdclass

#mediapace



Water Scientists
@WaterScientists

Using satellites to save leaky pipes
bit.ly/1RvXYPy via @theage #waters #science



RETWEET
1

LIKES
9



10:34 PM - 20 Mar 2016



↻ 1

♥ 9



#BeTheSignal



Katherine Hayhoe
@KHayhoe



Gavin Schmidt
@ClimateOfGavin