

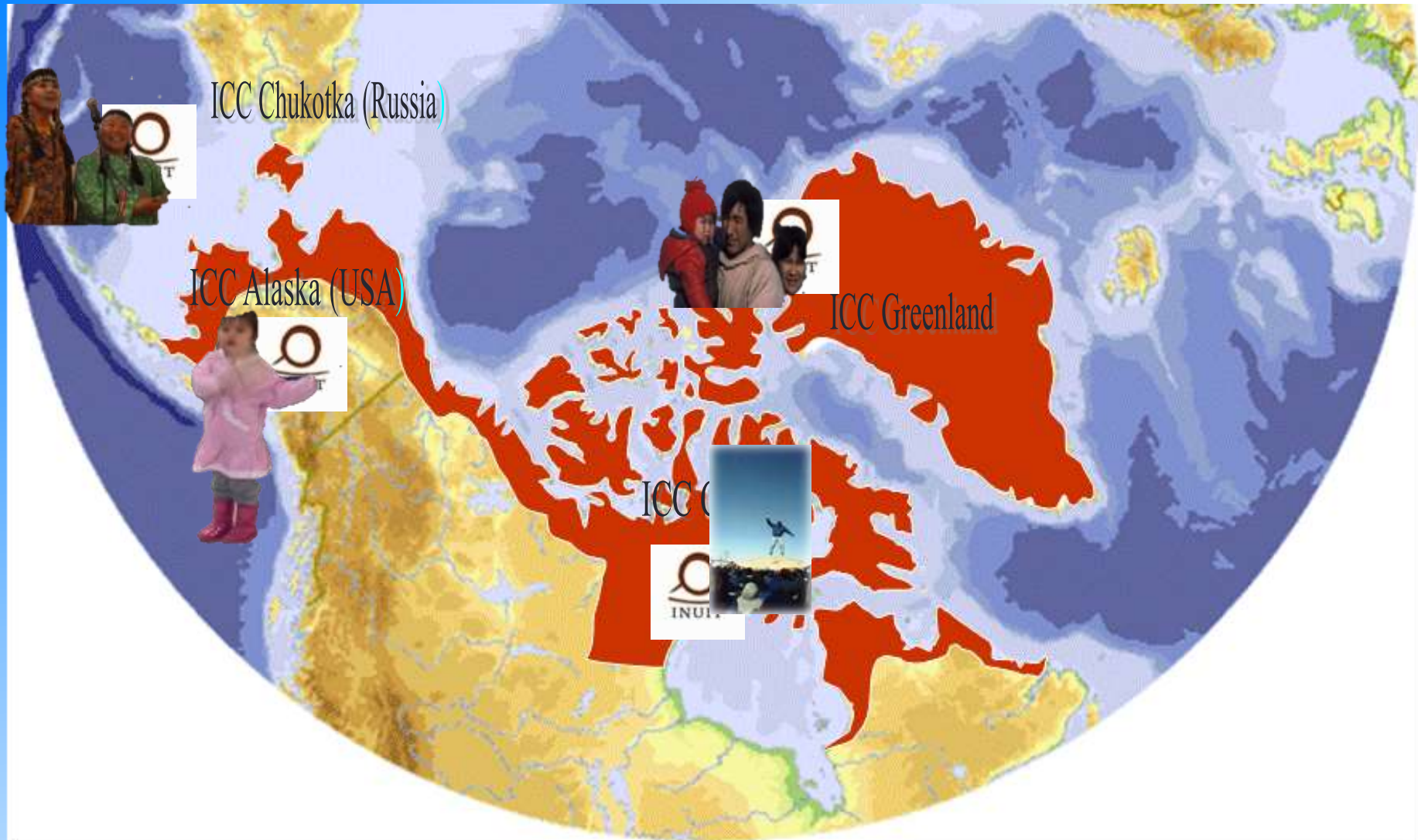
# How to Assess Food Security from an Inuit Perspective: Building a Conceptual Framework on How to Assess Food Security in the Alaskan Arctic

Presented by: Carolina Behe  
Interagency Arctic Research Policy Committee  
June 25, 2014



- Inuit Circumpolar Council (ICC)
- Life in the Arctic
- What is Food Security
- Why An Assessment Tool is Needed
- Methodology
- Sharing the Framework





ICC Chukotka (Russia)

ICC Alaska (USA)

ICC Greenland

ICC C

# ICC's International Engagements

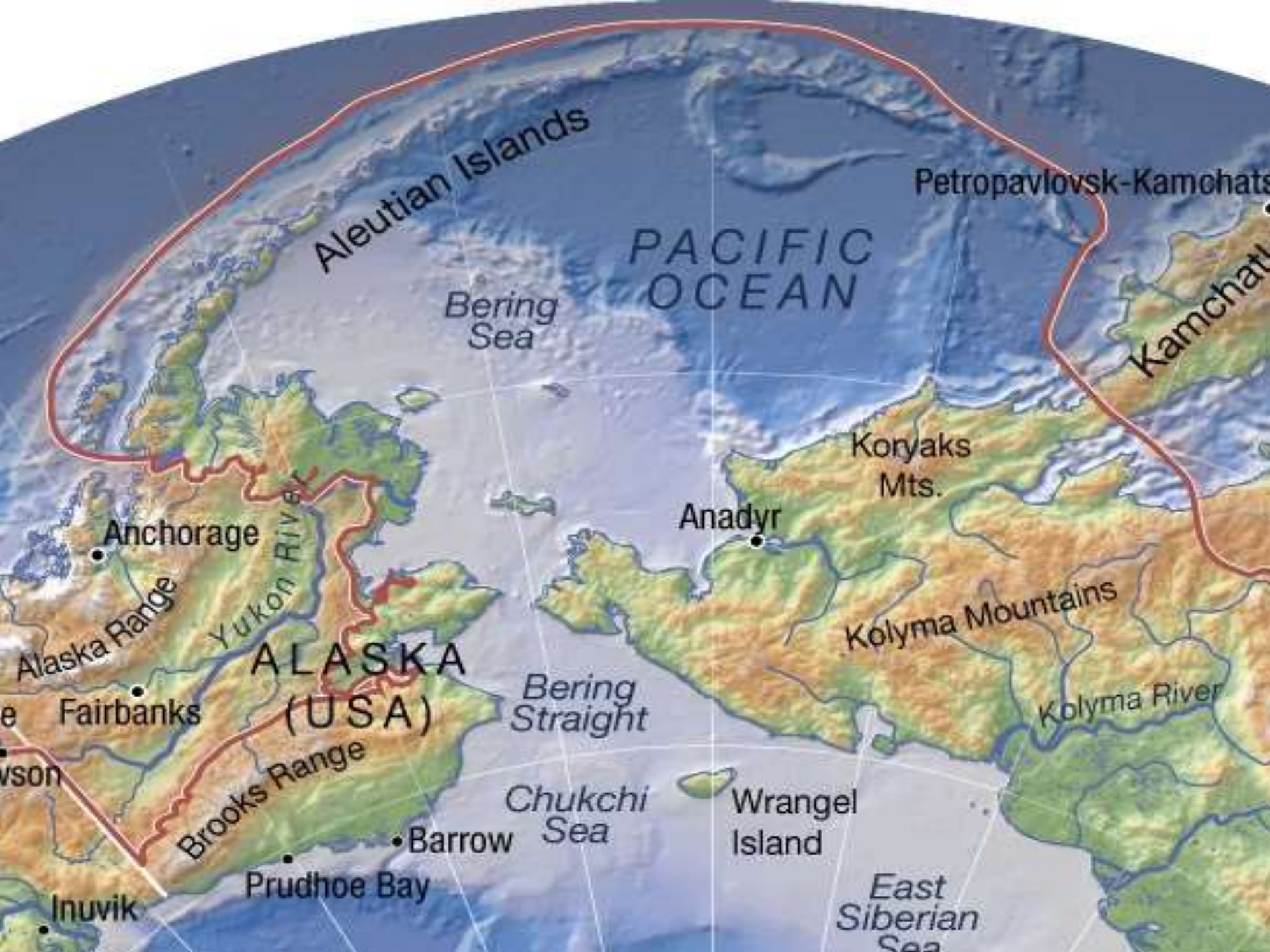
- Conservation of Arctic Flora and Fauna
- Task Force on Oil Spill Response
- Inuit Health
- Commission on Human Rights
- Mercury Expert Group
- POPs Expert Group
- RAMSAR
- WIPO
- Sustainable Development Working Group
- UNFCCC
- Protection of Arctic Marine Ecosystem
- Convention on Biological Diversity
- International Whaling Commission
- UNEP (incl. INC)
- CITIES



# What We Work On



- Food security
- Language
- Human and indigenous peoples' rights
- Environment
- Climate Change
- Contaminants
- Sustainability
- Biodiversity
- Culture and Language
- Resource Development
- Arctic Sovereignty
- Health





Sam Tawarak



North Slope Borough



Sam Tawarak

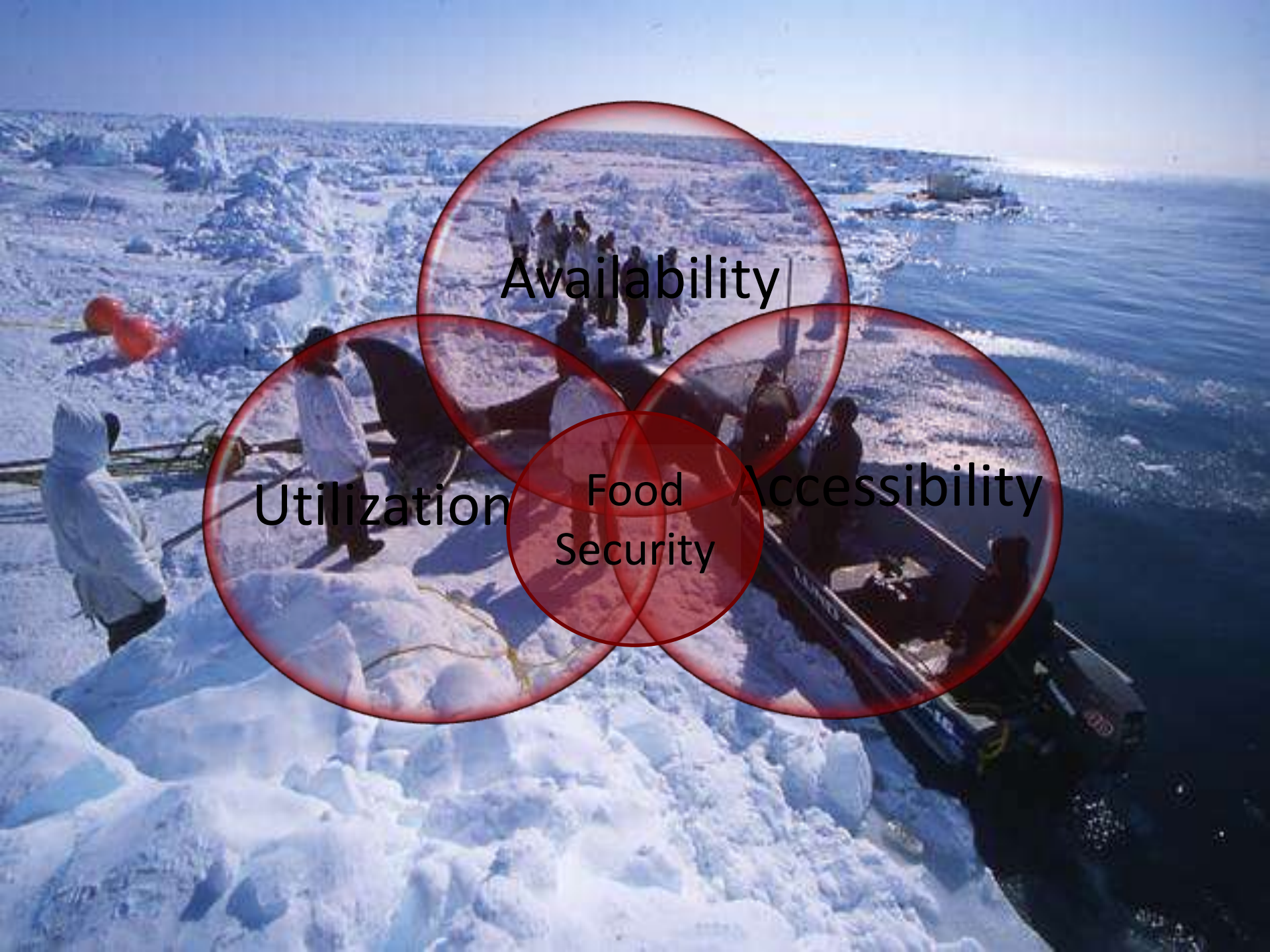


Mary Sage

# COMMUNITY CONCERNS

- TEMPERATURES & ICE COVERAGE
- INDUSTRY ACTIVITY
- SPECIES DISTRIBUTION AND ABUNDANCE
- EROSION RATES AND STORM SURGES
- SPECIES WELLNESS
- TOXICITY LEVELS
- CULTURAL RELATIONSHIP WITH THE ENVIRONMENT





Availability

Utilization

Food  
Security

Accessibility



# Food Security

By: Mary Sage

By: Jackie Cleveland

By: Ronald Brower

By: Ronald Brower

03/2006

# How to Evaluate Arctic Food Security

- Draw Together Multiple Sources of Knowledge
- Incorporate The Human Dimension
- Increase Understanding of the Arctic

- 
- A photograph of two women standing behind a wooden table outdoors. The table is covered with several large, fresh salmon fillets. The woman on the left is wearing a grey jacket and has her hair tied back. The woman on the right is wearing a blue jacket and a red hood. They are both smiling at the camera. In the background, there is a wooden structure with a blue roof, possibly a shed or a covered walkway, and a grassy field under an overcast sky.
- Define Food Security
  - Identify Food Security And Insecurity Drivers
  - Identify Monitoring Methods Within Traditional Knowledge
  - Provide A Tool To Assess Food Security

# Methodology

- Advisory Committee
- Community Involvement
- Meeting With Experts
- Regional Workshops/ Evaluation And Validation
- Review



Chukchi Sea

Beaufort Sea  
Nuiqsut

Point lay

North Slope Arctic

Kaktovik

Kivalina

Northwest Arctic

Kobuk

Sealwik

Wales

Bering Straits

Gambell

Stebbins

Emmonak

Yukon-Kuskokwim

Pilot Station

Lower Kalskag

Atmautluak

Toksook Bay

Bering Sea

Mekoryuk

Bristol Bay

Data SIO, NOAA, U.S. Navy, NGA, GEBCO

US Dept of State Geographer

© 2012 Google

© 2012 GIS Innovatsia



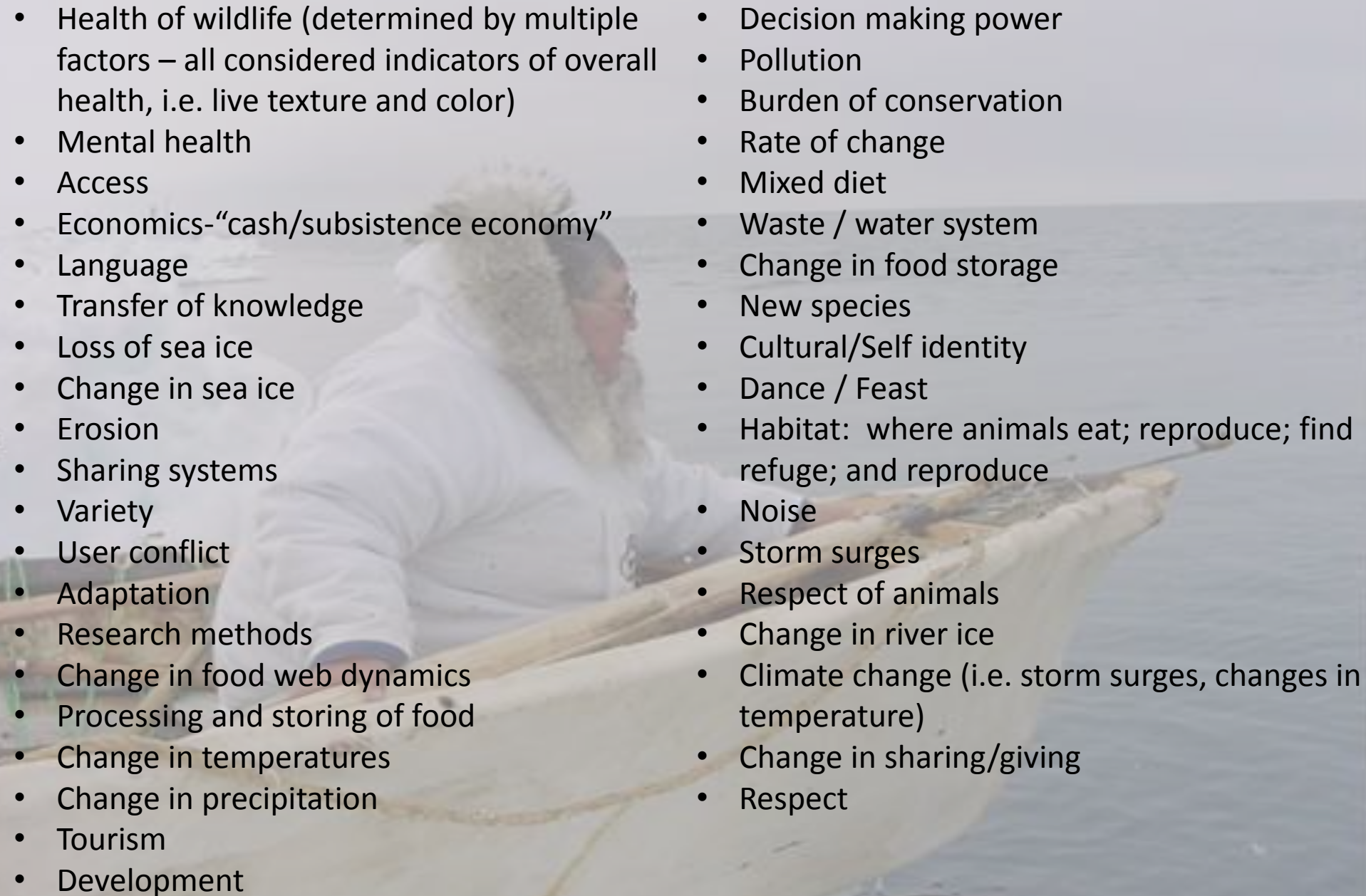
Food Security = Environmental Health





# DRIVERS OF FOOD IN/SECURITY



- 
- Health of wildlife (determined by multiple factors – all considered indicators of overall health, i.e. live texture and color)
  - Mental health
  - Access
  - Economics-“cash/subsistence economy”
  - Language
  - Transfer of knowledge
  - Loss of sea ice
  - Change in sea ice
  - Erosion
  - Sharing systems
  - Variety
  - User conflict
  - Adaptation
  - Research methods
  - Change in food web dynamics
  - Processing and storing of food
  - Change in temperatures
  - Change in precipitation
  - Tourism
  - Development
  - Decision making power
  - Pollution
  - Burden of conservation
  - Rate of change
  - Mixed diet
  - Waste / water system
  - Change in food storage
  - New species
  - Cultural/Self identity
  - Dance / Feast
  - Habitat: where animals eat; reproduce; find refuge; and reproduce
  - Noise
  - Storm surges
  - Respect of animals
  - Change in river ice
  - Climate change (i.e. storm surges, changes in temperature)
  - Change in sharing/giving
  - Respect

# Identify Methods Within Traditional Knowledge Of Monitoring Identified Drivers





**Finished Product**



**WHAT FOOD SECURITY IS ... WHAT  
IMPACTS FOOD SECURITY**

**NUTRITION \* HEALTH \* CLOTHING**

**CULTURE \* EDUCATION \* SPIRITUALITY**

**LANGUAGE \* HUNTING/FISHING \* TOURISM**

**SEASONAL CHANGE/CYCLE \* PERMA FROST**

**FOOD STORAGE \* PLANTS \* WATER \* ACCESSIBILITY**

**ECONOMICS \* CHANGE IN HUNTING STRATEGIES \* FUEL**

**ENVIRONMENTAL CONNECTION \* SHIPPING \* WASTE DISPOSAL**

**COMMUNITY SHARRING \* WEATHER FORCASTING \* CHANGE IN ANIMALS**

**CHANGE IN PLANTS \* HEALTH OF PLANTS AND ANIMALS**

**AND MUCH MORE...**

# Quyanaq, Quyana, Taikuu

[www.iccalaska.org](http://www.iccalaska.org)



# References

- Anisimov, O.A., D.G. Vaughan, T.V. Callaghan, C. Furgal, H. Marchant, T.D. Prowse, H. Vilhjálmsson and J.E. Walsh, 2007: Polar regions (Arctic and Antarctic). *Climate Change 2007: Impacts, Adaptation and Vulnerability. Contribution of Working Group II to the Fourth Assessment Report of the Intergovernmental Panel on Climate Change*, M.L. Parry, O.F. Canziani, J.P. Palutikof, P.J. van der Linden and C.E. Hanson, Eds., Cambridge University Press, Cambridge, 653-685.
- Behe, Carolina. Inuit Circumpolar Council - Alaska. North Slope Regional Food Security Workshop: *How to Assess Food Security from an Inuit Perspective: Building a Conceptual Framework on How to Assess Food Security in the Alaskan Arctic*. 2013.
- Burek, K.A, Gulland, Frances , O'Hara, Todd M. 2008. *Effects of climate change on Arctic marine mammal health. Ecological applications : a publication of the Ecological Society of America Vol. 18 (2). Pp. 126-34*
- Ford, James D. & Smit, Barry. 2004. *A Framework for Assessing the Vulnerability of Communities in the Canadian Arctic to Risks Associated with Climate Change. Arctic. Vol. 57 (4). Pp. 389-400.*
- Gautier, D. L., Bird, Kenneth J., Charpentier, Ronald R., Grantz, Arthur, Housekneht, David W., Klett, Timothy R., Moore, Thomas E., Pitman, Janet K., Schenk, Christopher J., Schuenemeyer, John H., Sorensen, Kai, Teenyson, Marilyn E., Valin, Zenon C., Wandrey, Craig J. 2009. *Assessment of Undiscovered Oil and Gas in the Arctic. Science Vol. 324. Pp. 1175-1179 (2009).*
- Loring, Philip A. & Gerlach, S.C. 2008. *Food, culture, and human in Alaska: an integrative health approach to food security. Environmental Science & Policy. Vol. 12 (4). Pg. 466-478*
- Marshall, M N. 1996. *Sampling for qualitative research. Family practice . Vol. 13 (6). Pp. 522-526.*
- Nuuk Declaration. 2011. <http://www.itk.ca/sites/default/files/Nuuk-Declaration.pdf>. Accessed: 12/10/12.
- Staatz, John M., D'Agostino, Victoire C., Sundber, Shelly. 1990. *Measuring Food Security in Africa: Conceptual, Empirical, and Policy Issues. American Journal of Agricultural Economics Vol. 72 (5). Pp. 1311-1317*

**Yegorov, Ivan. 2011. *Finding a key to the Arctic: Russia strives to become a leader in the exploration of the Arctic. No. Russian Press Digest. 808p.***

[http://www.grida.no/graphicslib/detail/arctic-conservation-area-caff-topographic-map-aba-version-2010\\_6cb5#](http://www.grida.no/graphicslib/detail/arctic-conservation-area-caff-topographic-map-aba-version-2010_6cb5#)

#### Photo Credits

Slide 2. Carolina Behe

Slide 3. Counter Clockwise:

1) Beverly Eliason; 2) Carolina Behe; 3) ICC Canada.

<http://inuitcircumpolar.com/section.php?Nav=Section&ID=1&Lang=En>; 4) thedude.com

Slide 4-5. ICC-CA

Slide 7. Clockwise:

1) Sam Tawarak; 2) Ronald Brower; 3) Sam Tawarak; 4) Sam Tawarak

Slide 8. Mary Sage

Slide 9. Mary Sage

Slide 10. Jackie Cleveland; Carolina Behe; Mary Sage; Ronald Brower

Slide 11-13. Jackie Cleveland

Slide 15. Clockwise

1) Carolina Behe; 2) Meghan Topkok; 3) Gay Sheffield; 4) Chloe Naylor; 5) Sara Shoenfelder

Slide 16. Carolina Behe; (DCRACPLR 2001)

Slide 17-18. Mary Sage

Slide 19. Carolina Behe

Slide 20. Kelly Eningowuk

Slide 22. Noah Naylor

