

Situational Awareness in Alaska

The role for USArray

*Natural gas fires following
The M7.1 Iniskin earthquake
January 2016*

Michael West
State Seismologist



**ALASKA
EARTHQUAKE
CENTER**

ASHSC Alaska Seismic Hazards
Safety Commission

Photo: Kenai Fire Department

Situational awareness



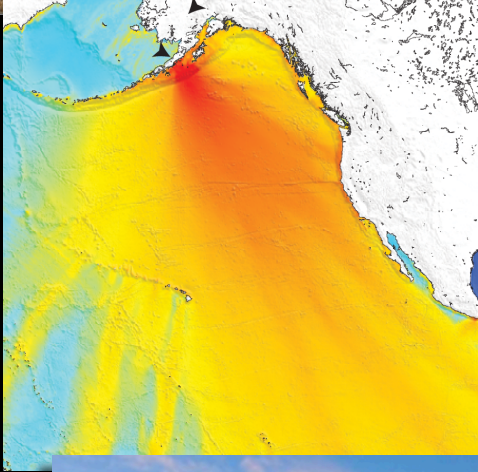
earthquake



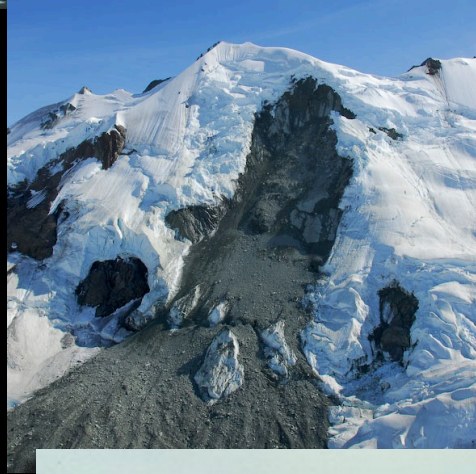
glacier



storm



tsunami



landslide



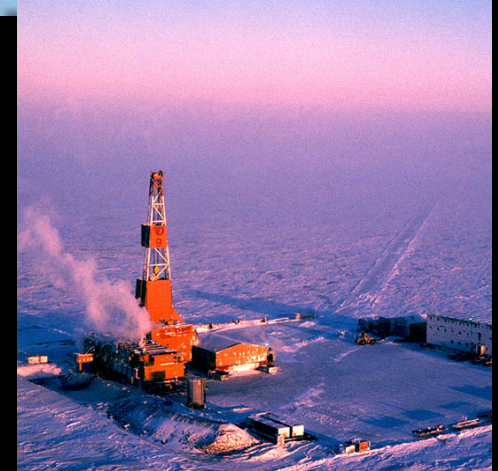
transportation



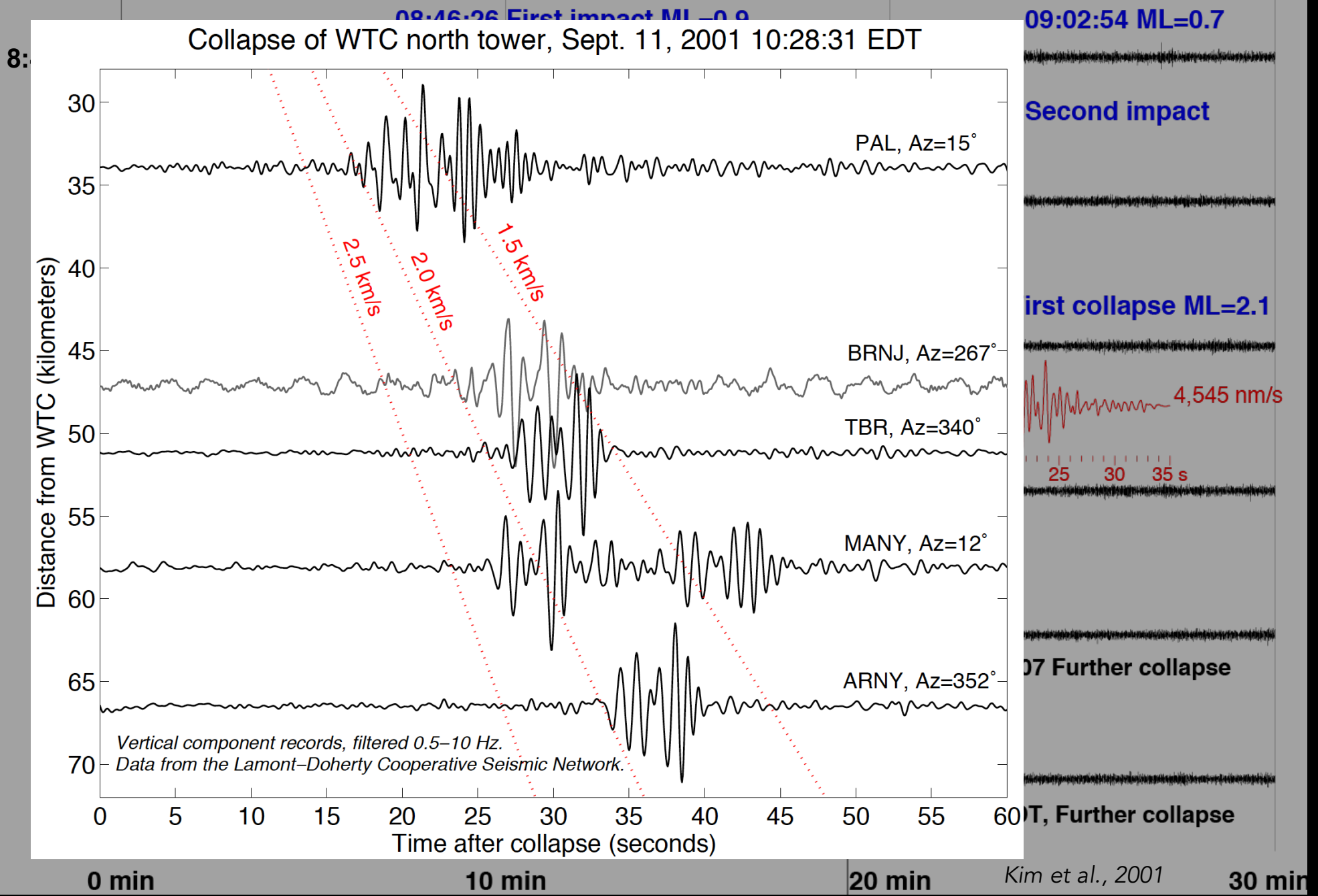
volcano



mining

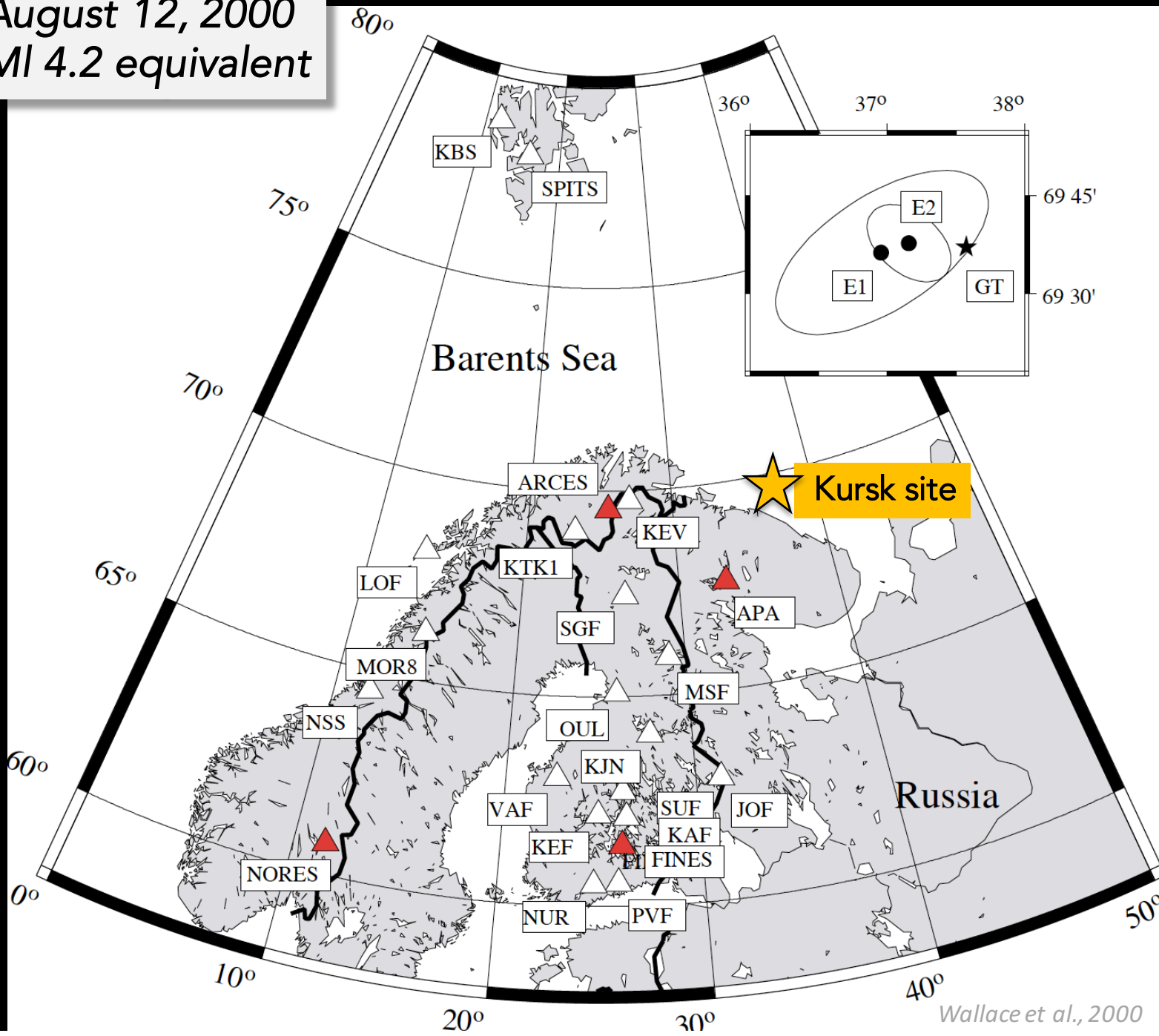


oil/gas

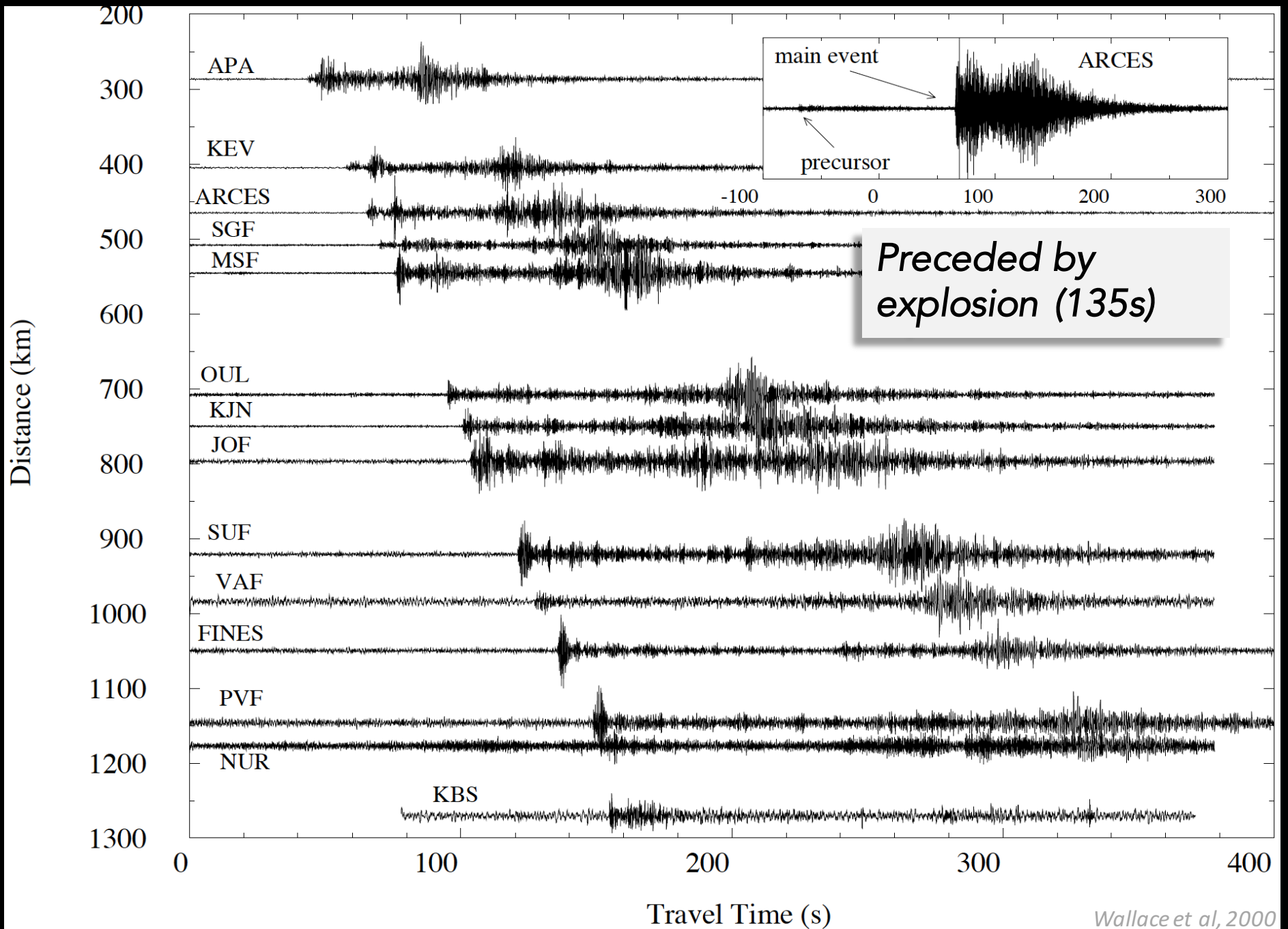


Kursk submarine

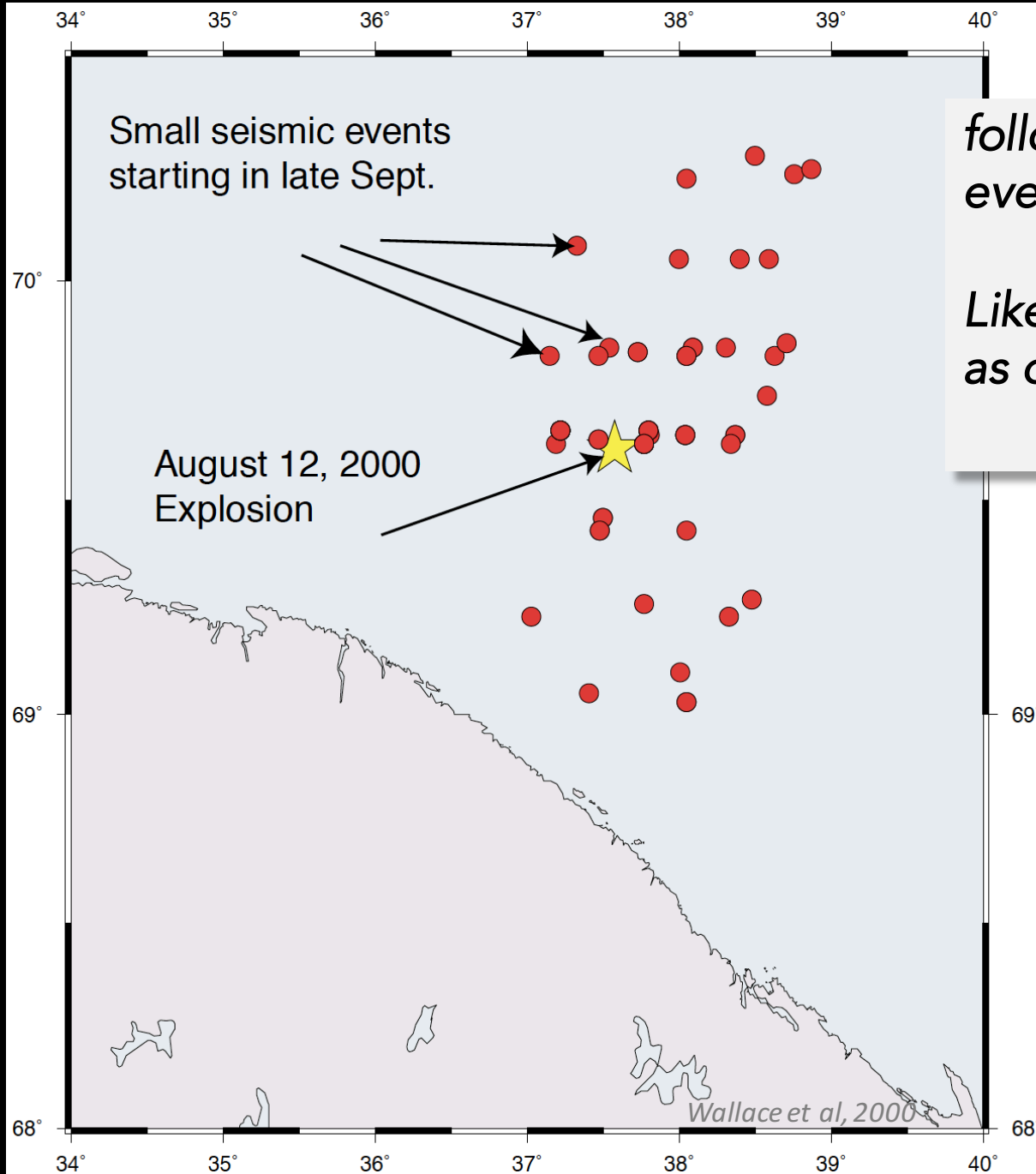
August 12, 2000
Ml 4.2 equivalent



Kursk submarine



Kursk submarine



followed by suspicious events in aseismic region

Likely depth charges used as deterrent (CNN)

mining

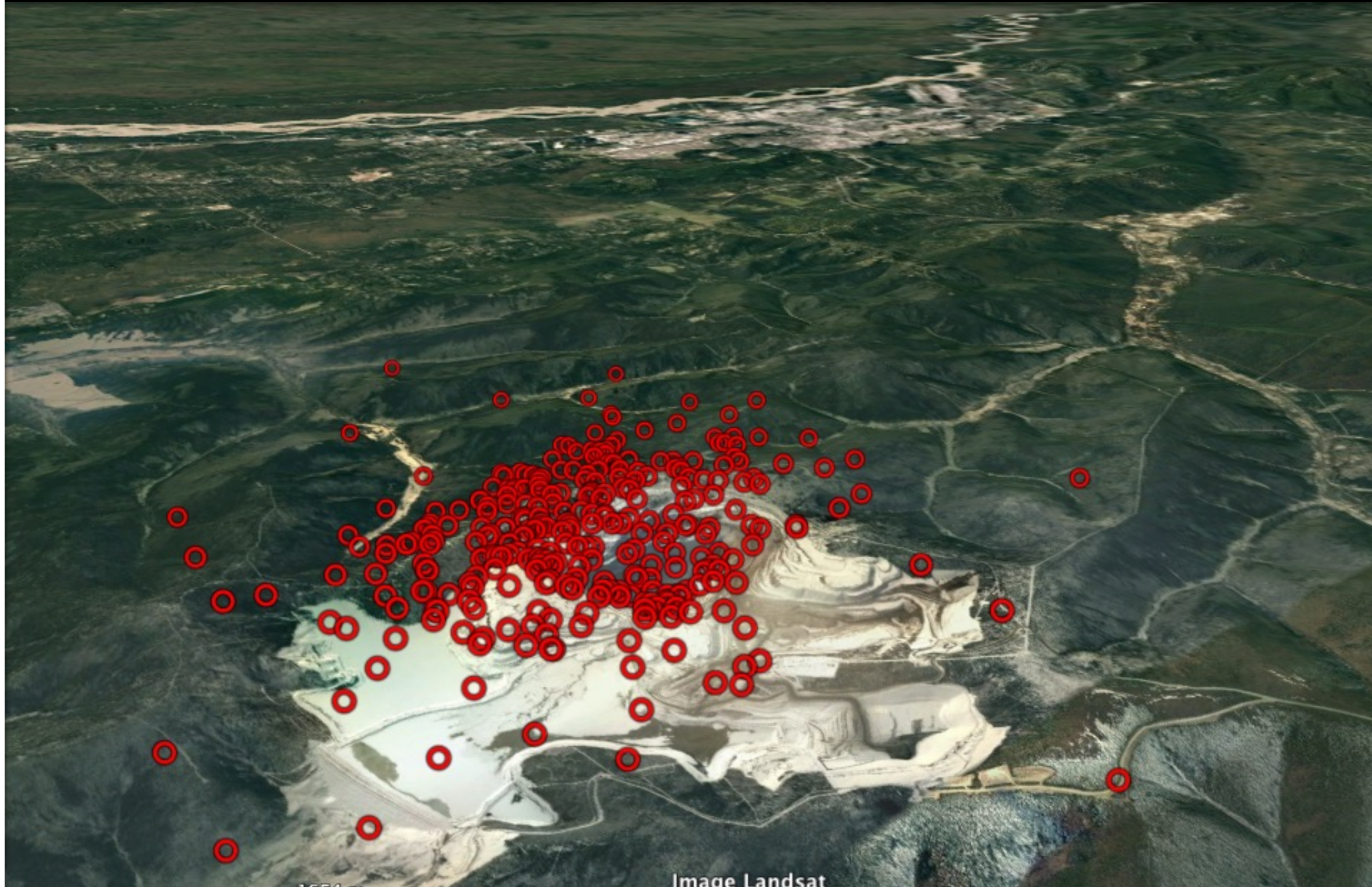
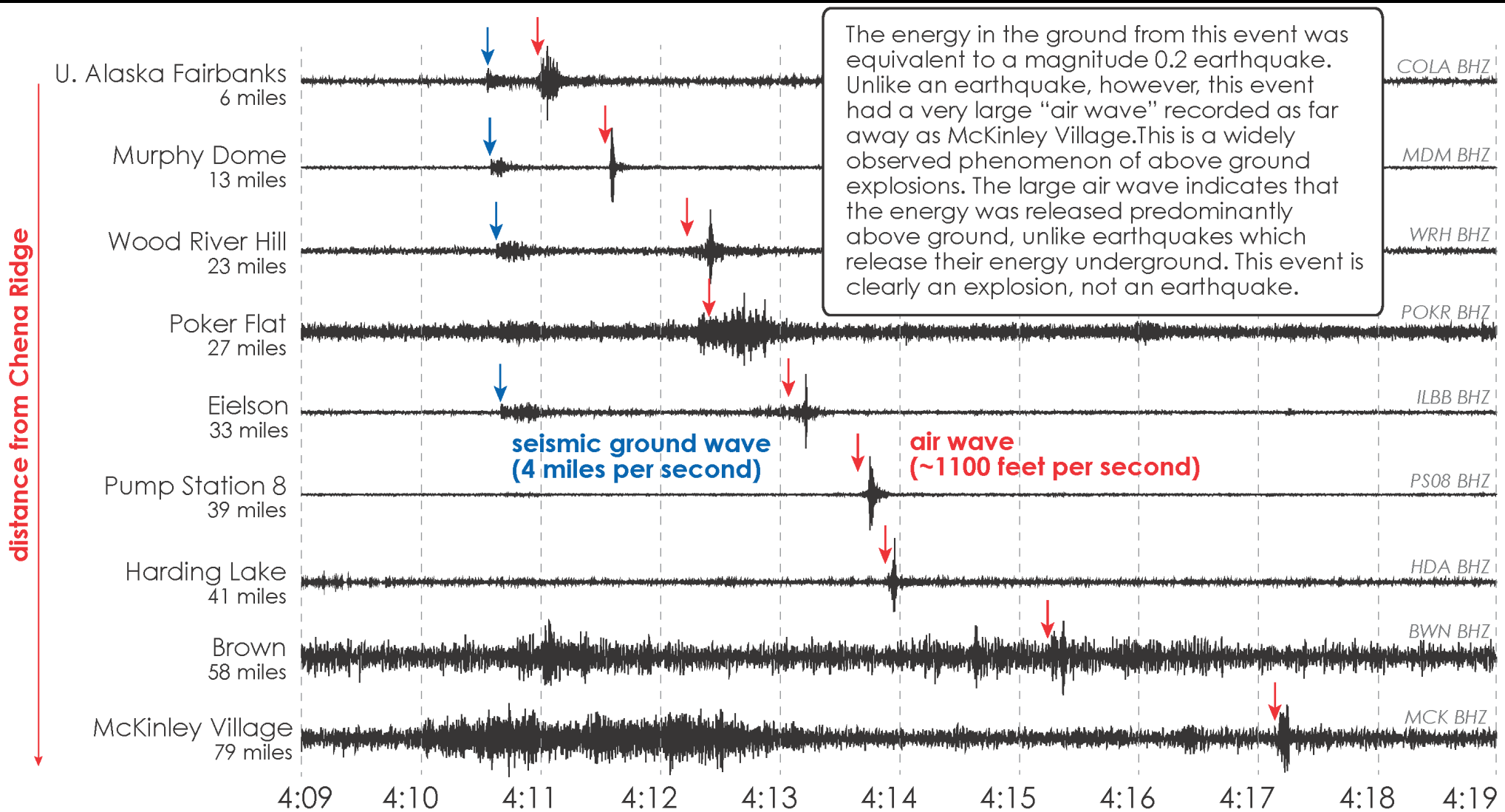
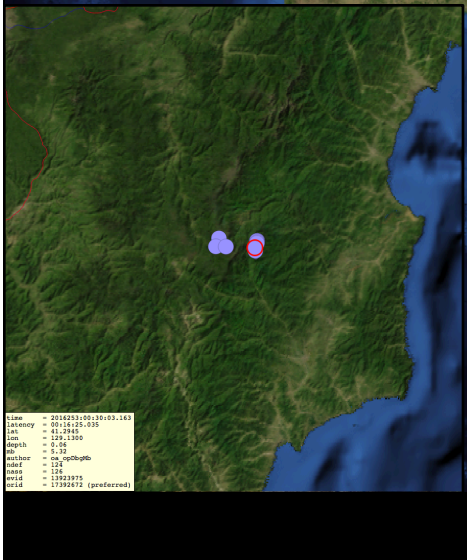
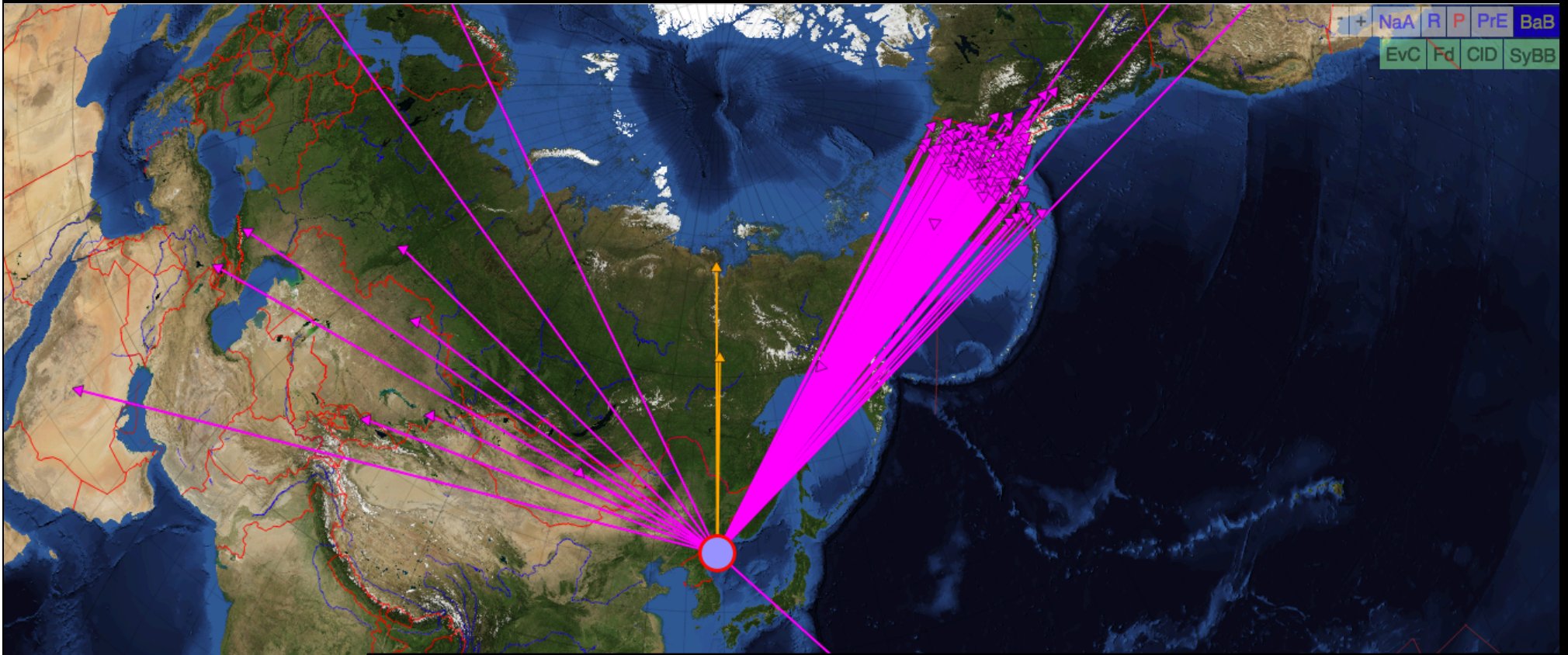


Image Landsat

chemical explosions



North Korea

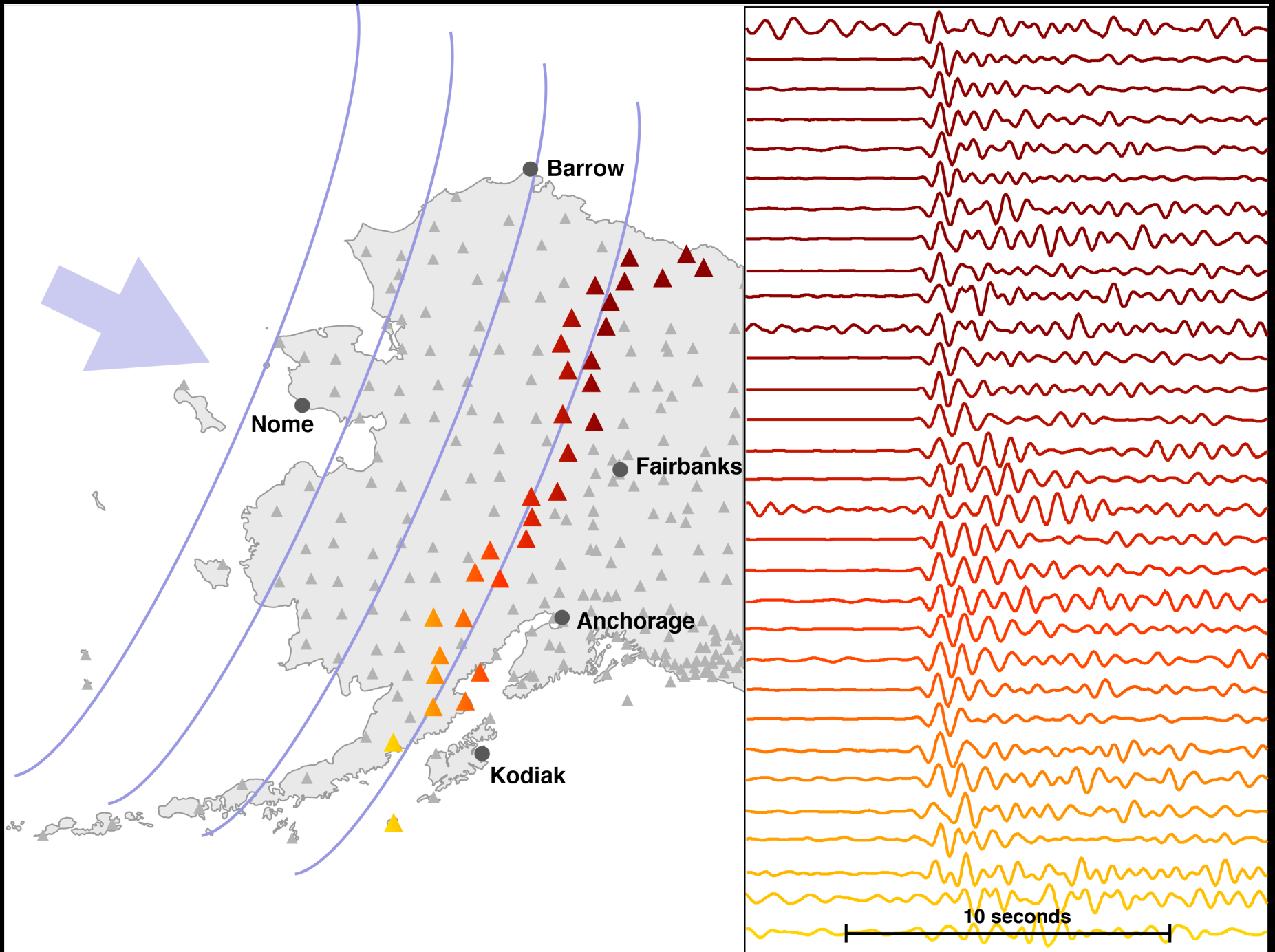


pref	author	orid	depth	ndef	mt	mags	latency	auth	lat	lon
oa_opDbgMb	17392669	0 km	117	5.3 Mb	11:29 minutes	oa_opDbgMb	41.3080	129.1378		
oa_opDbgMb	17392668	0 km	110	5.3 Mb	10:33 minutes	oa_opDbgMb	41.3109	129.1383		
oa_opDbgMbMI	17392666	0 km	99	5.3 Mb	10:15 minutes	oa_opDbgMbMI	41.3142	129.1378		
oa_opDbgMbMI	17392665	0 km	83	5.4 Mb	9:59 minutes	oa_opDbgMbMI	41.3139	129.1374		
oa_opDbgMIMb	17392664	0 km	70	5.4 Mb	9:46 minutes	oa_opDbgMIMb	41.3138	129.1375		
oa_opDbgMIMb	17392663	0 km	57	5.4 Mb	9:36 minutes	oa_opDbgMIMb	41.3152	129.1388		
oa_opDbgMIMb	17392661	0 km	41	5.4 Mb	9:24 minutes	oa_opDbgMIMb	41.3158	129.1389		
oa_opDbgMbMI	17392659	0 km	30	5.2 Mb	9:15 minutes	oa_opDbgMbMI	41.3148	129.1382		
oa_opDbgMbMI	17392658	0 km	18	5.2 Mb	9:08 minutes	oa_opDbgMbMI	41.3132	129.1380		

origin time	evid	ndef	R	prefauth	mag	region
2016-253 (09 Sep) 00:30:03 UTC	13923975	124		oa_opDbgMb	5.3 Mb	NORTH KOREA
2016-253 (09 Sep) 00:28:45 UTC	13923973	28	r	AK:natasha	1.1 ML	CENTRAL ALASKA
2016-253 (09 Sep) 00:03:45 UTC	13923967	25		oa_opDbgMb	5.7 Mb	CORDOBA PROVINCE, ARGENTINA
2016-252 (08 Sep) 23:51:20 UTC	13923963	39	r	AK:kozyreva	1.4 ML	SOUTHERN ALASKA
2016-252 (08 Sep) 23:45:14 UTC	13923842	21	r	AK:kozyreva	1.1 ML	SOUTHEASTERN ALASKA
2016-252 (08 Sep) 23:41:32 UTC	13995723	27	r	AK:kozyreva	1.3 ML	SOUTHERN ALASKA
2016-252 (08 Sep) 23:35:06 UTC	13923966	0		IISGS	4.6 Mb	NICOBAR ISLANDS, INDIA REGION

Line = 2014253-00:30:03-143
 latency = 00:16:25.035
 lat = 41.3080
 lon = 129.1378
 depth = 0.00
 mt = 5.3
 author = oa_opDbgMb
 ndef = 124
 mag = 5.3
 evid = 13923975
 orid = 17392669 (preferred)

North Korea



Ice jam flooding



Galena, Alaska, May 2013

Ice jam flooding

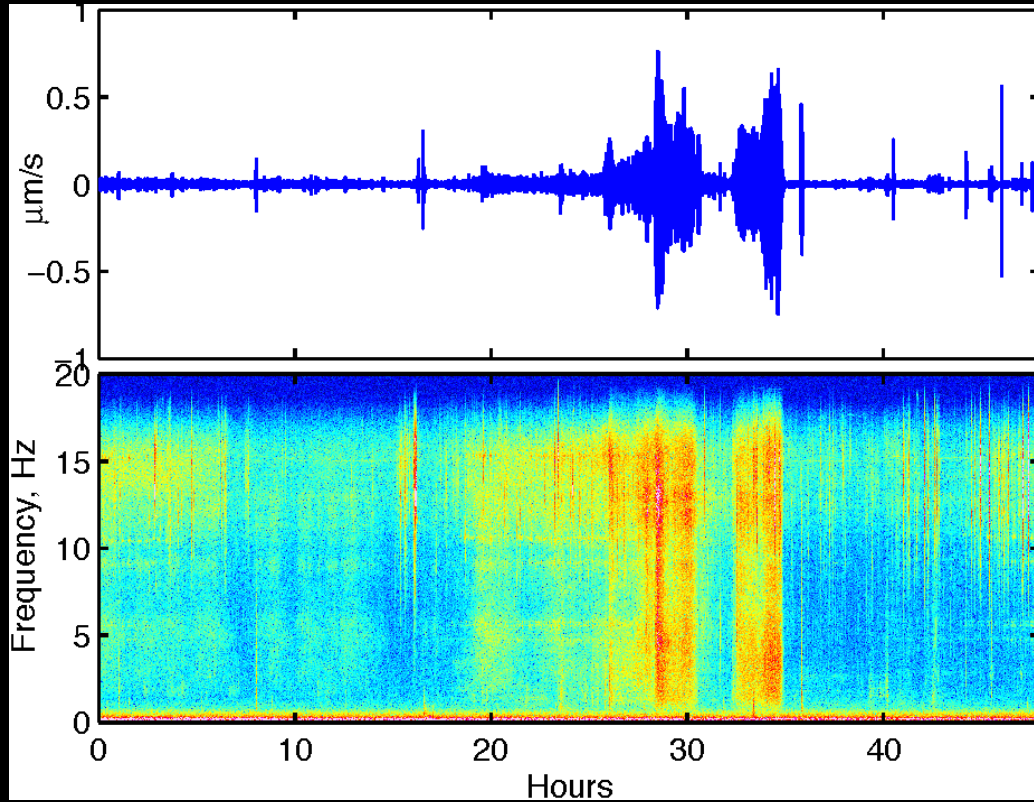


courtesy of Alaska Department of Public Safety

Ice jam flooding

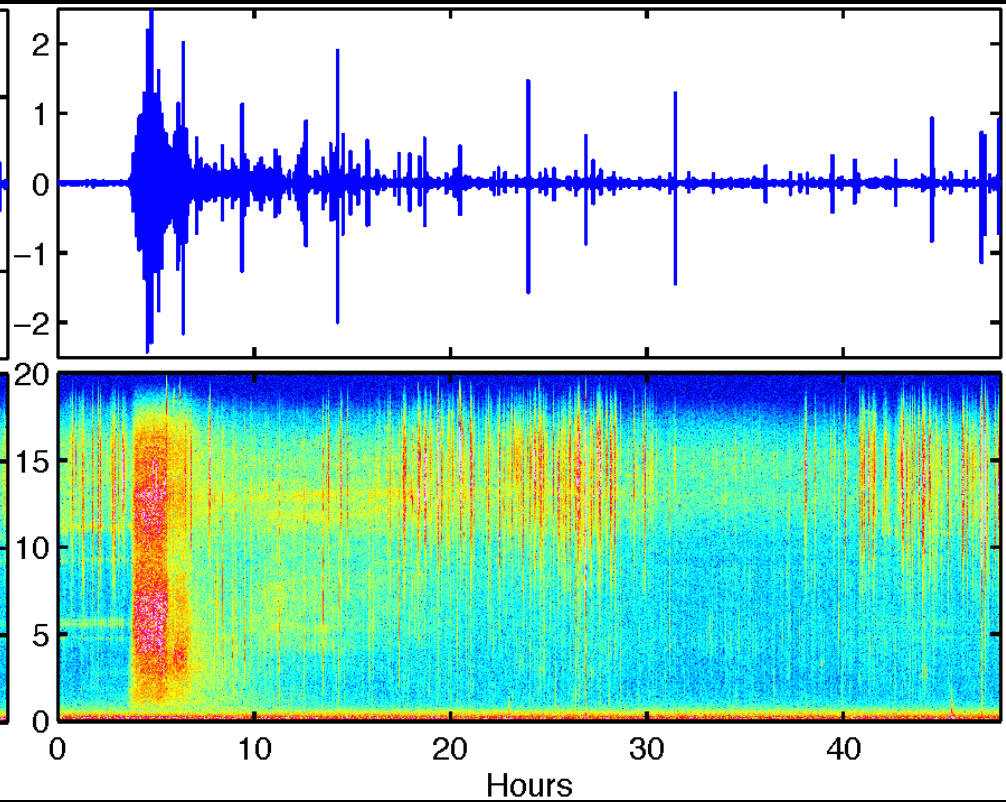
ice jam formation

May 3-4, 2009



ice jam failure

May 7-8, 2009



landslide tsunami

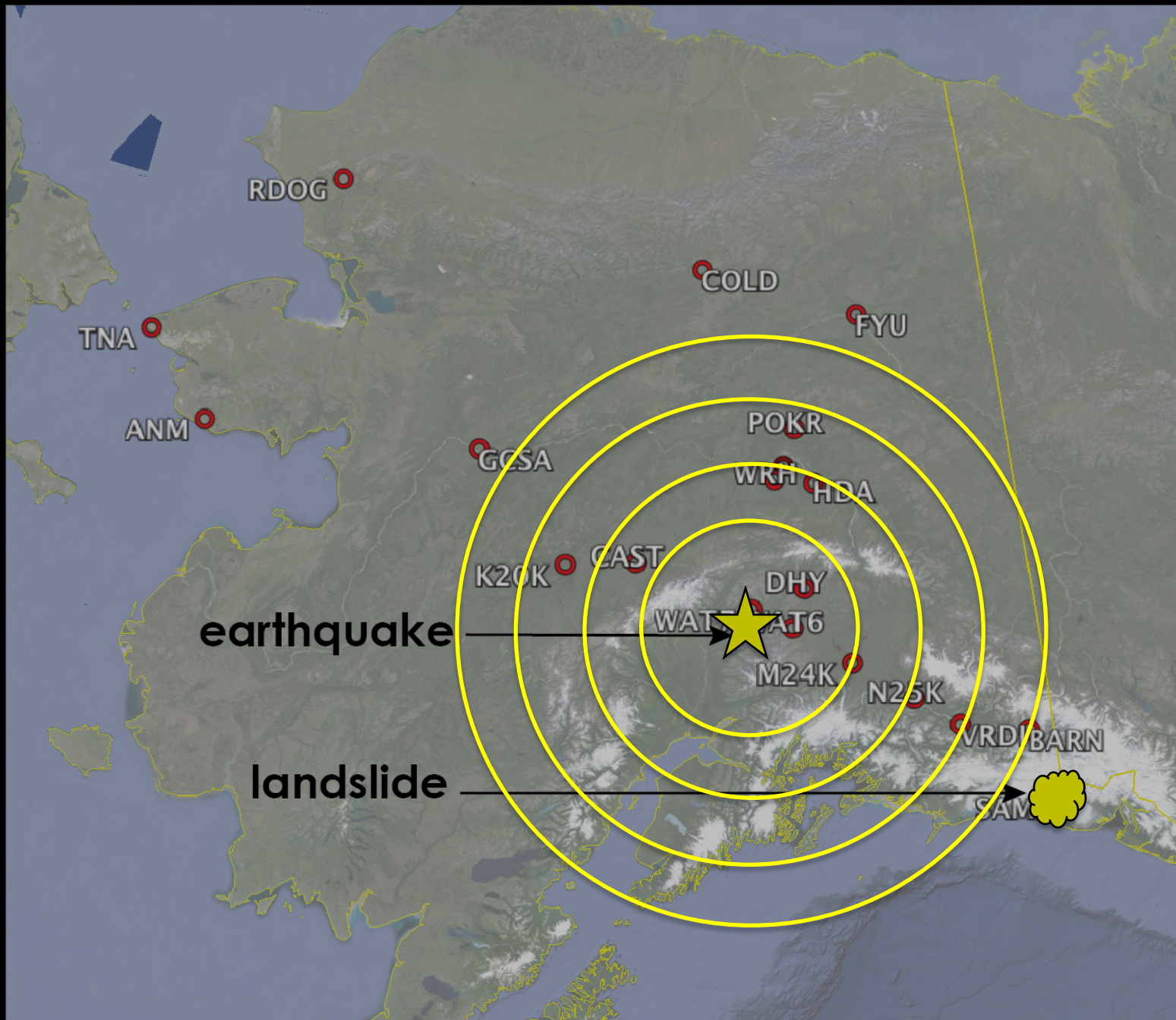


Alaska Dispatch News
Bjorn Olson

landslide tsunami

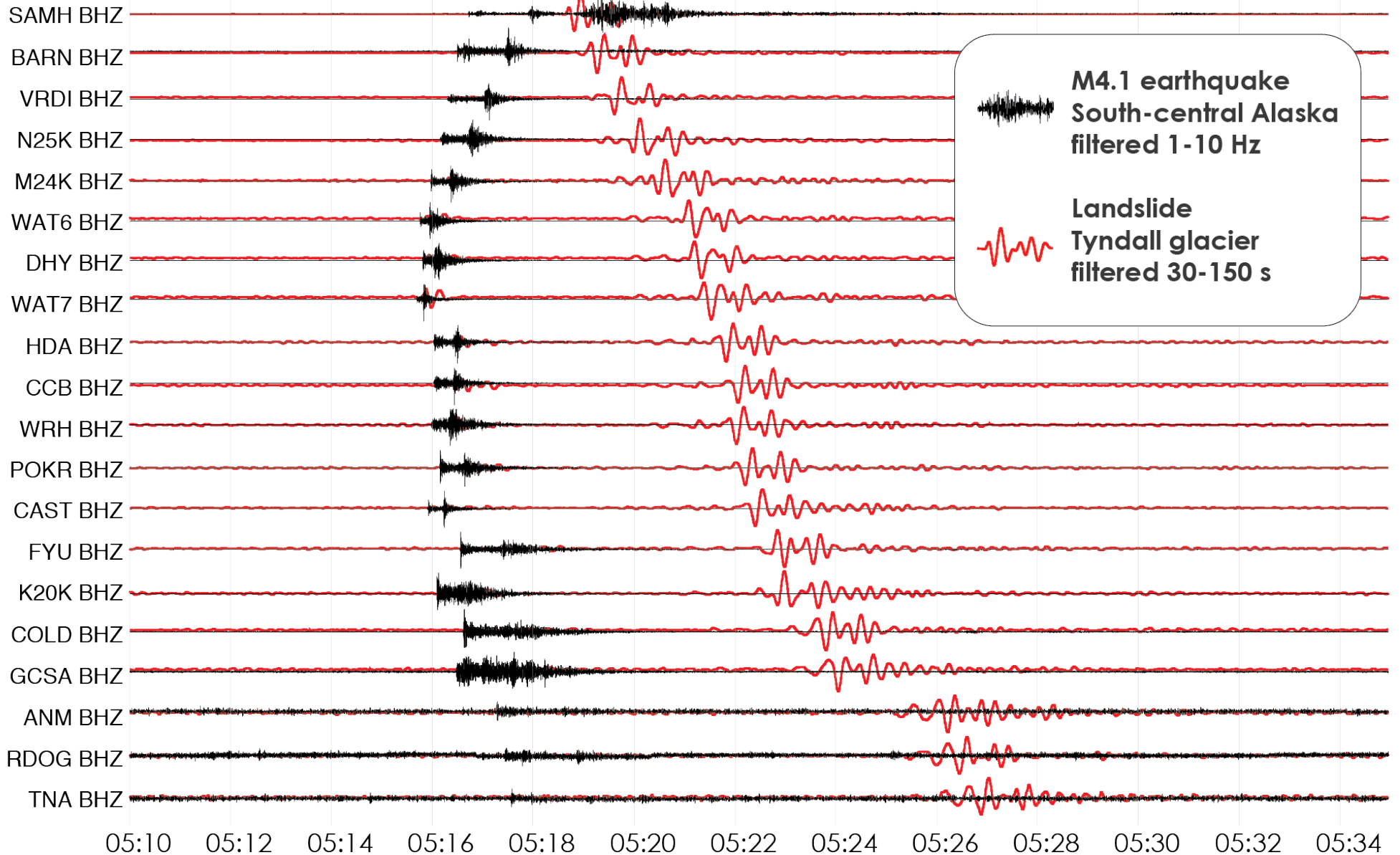
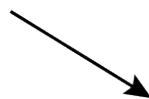


landslide tsunami



landslide tsunami

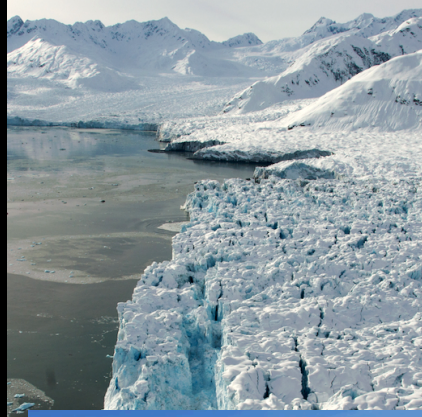
earthquake triggers landslide when
it reaches Tyndall 90 sec later



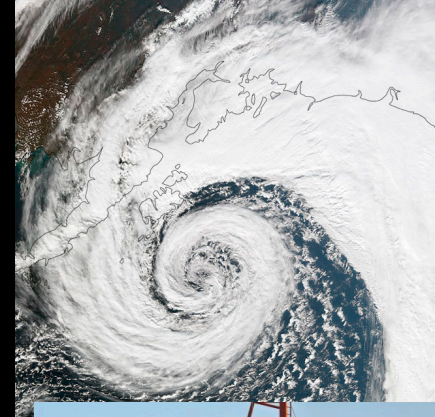
good strategy
good science
good stewardship



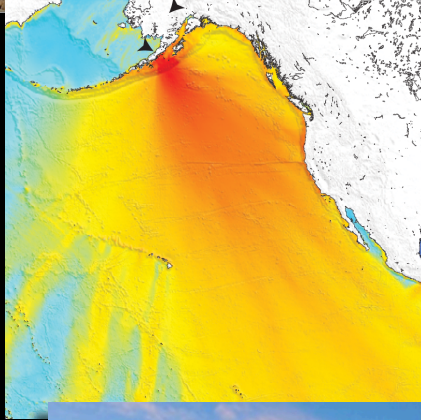
earthquake



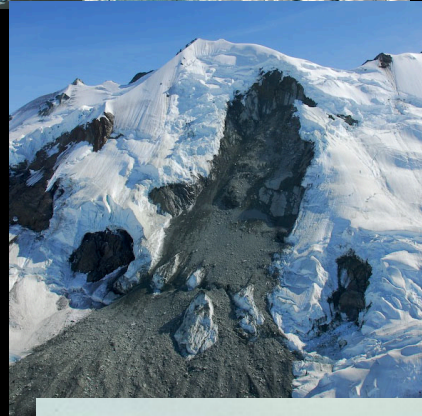
glacier



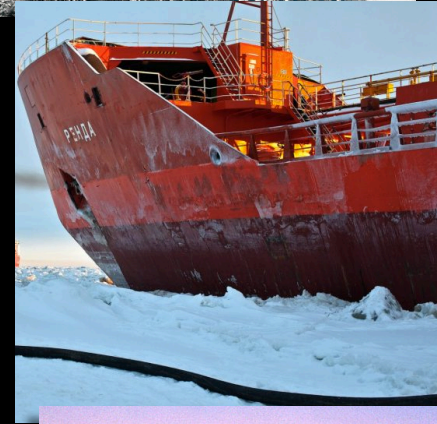
storm



tsunami



landslide



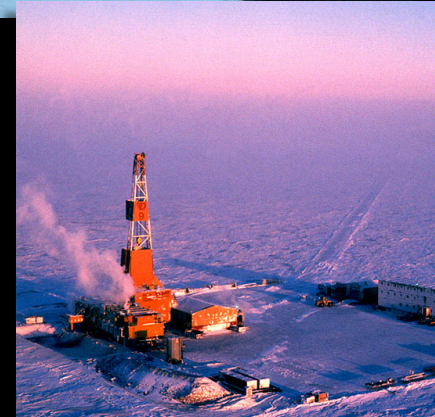
transportation



volcano



mining



oil/gas

