

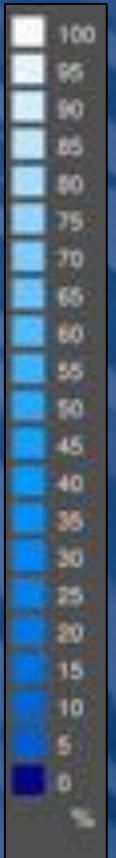
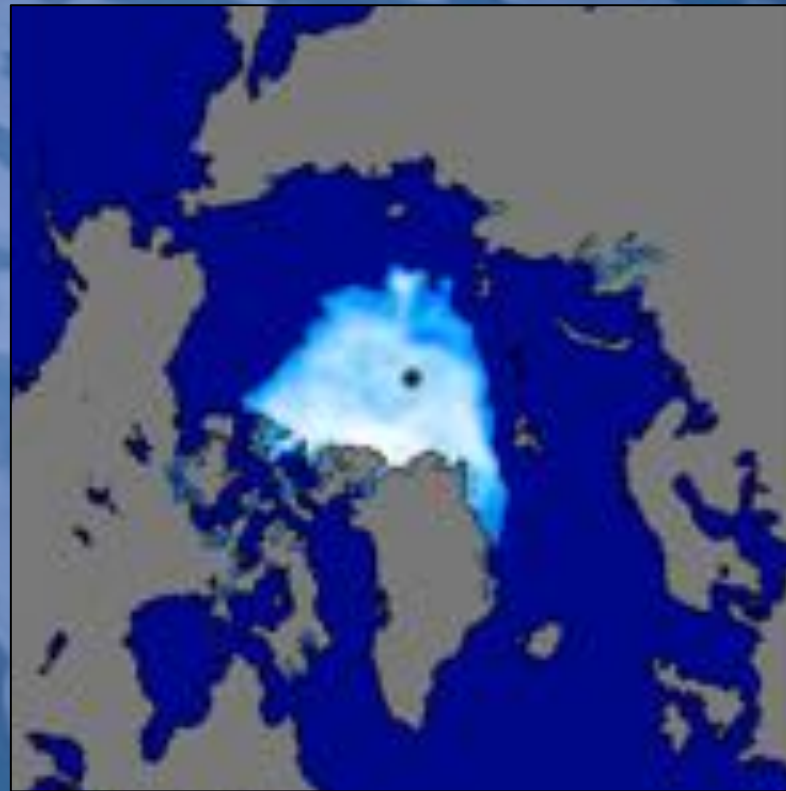
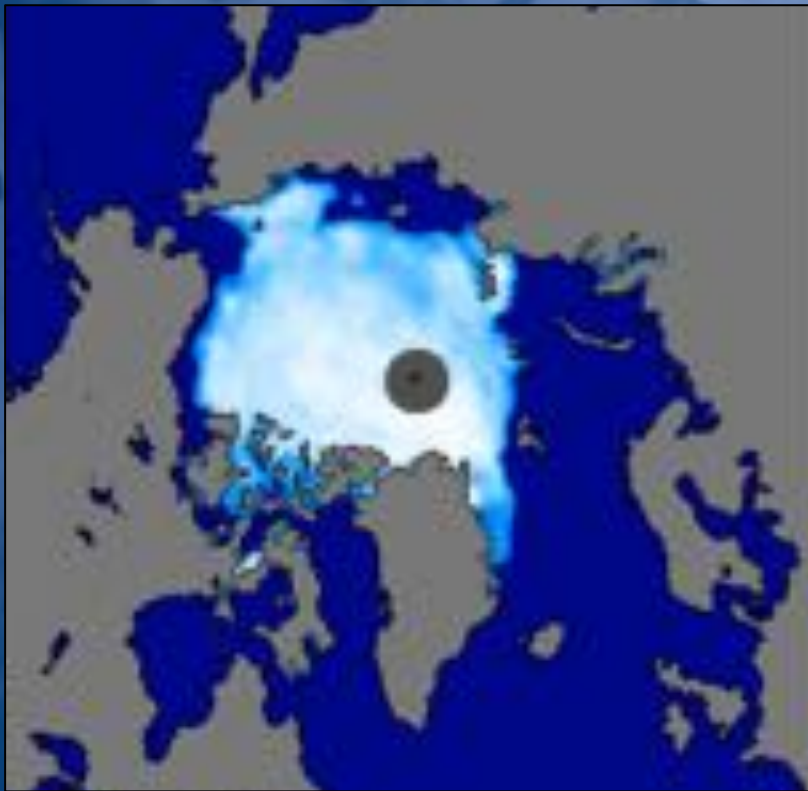
*Communicating Arctic sea ice  
observations and predictions,  
guided by science and society*

Walt Meier  
NASA Goddard



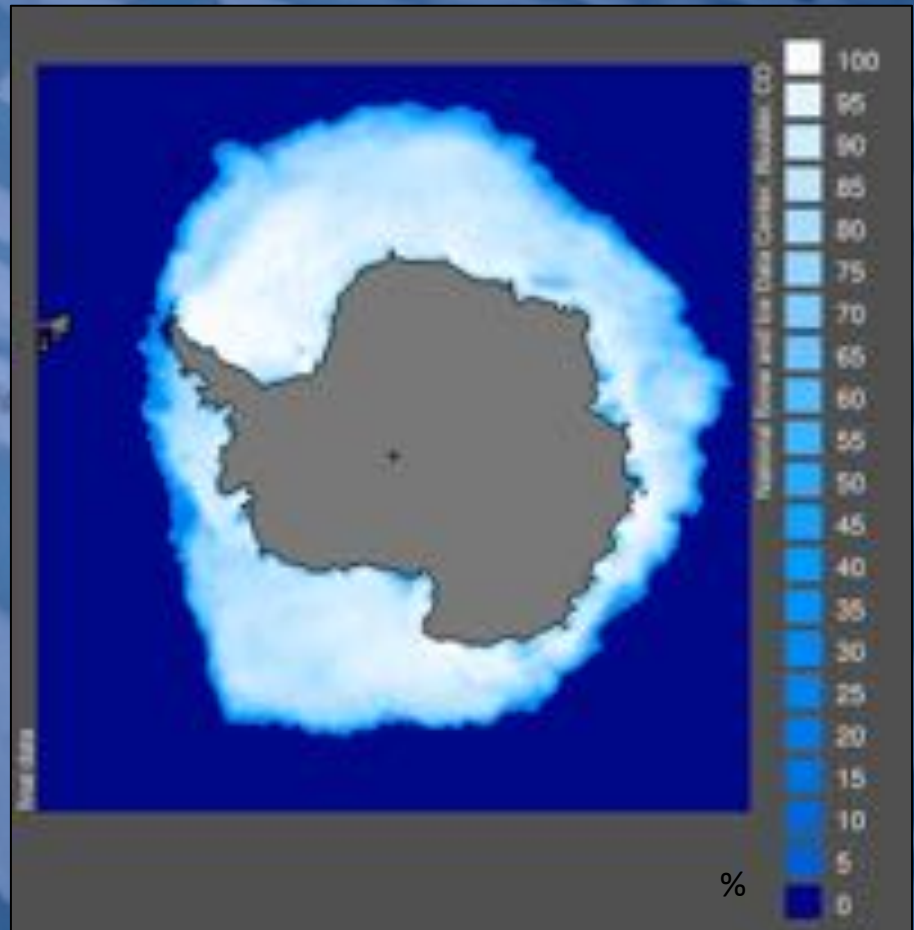
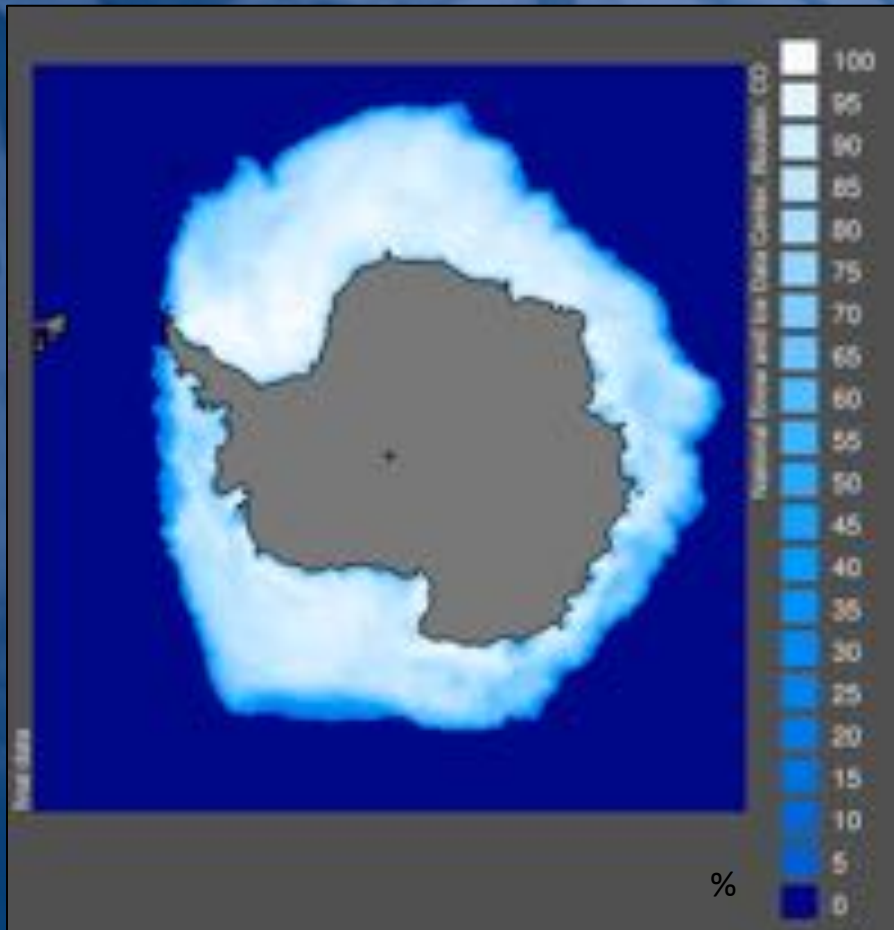
# *September Arctic sea ice*

Which image is the record low year and which image is an average year?



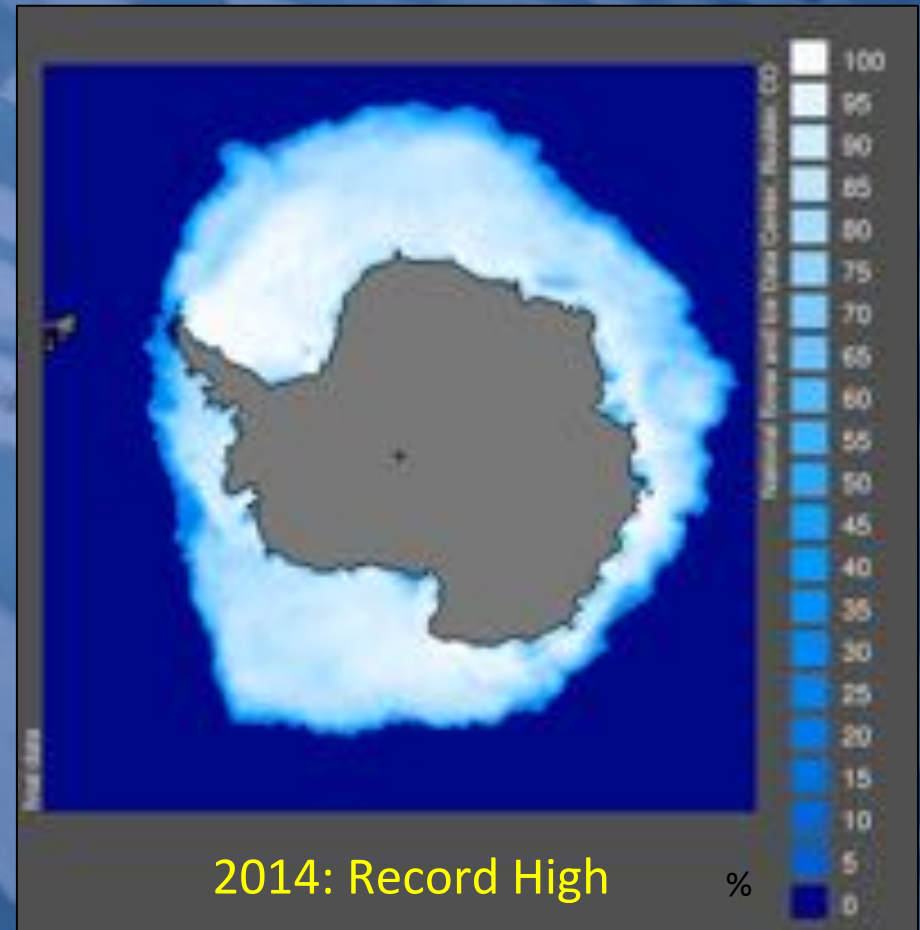
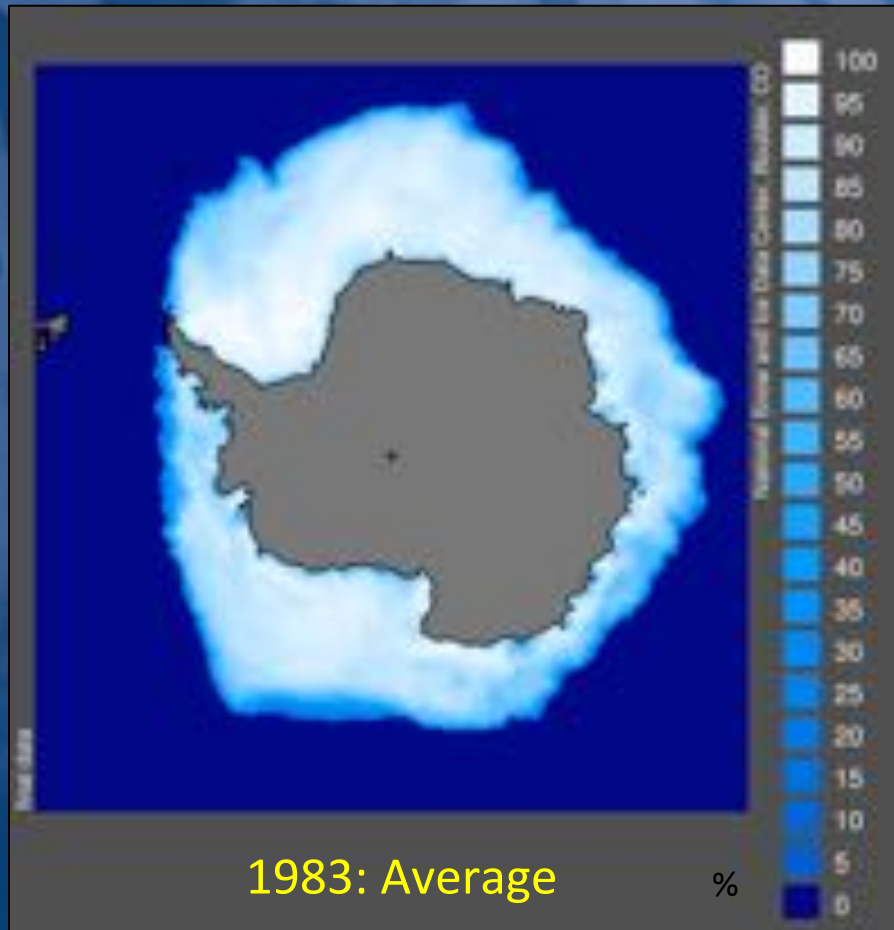
# *September Antarctic sea ice*

Which image is the record high year and which image is an average year?



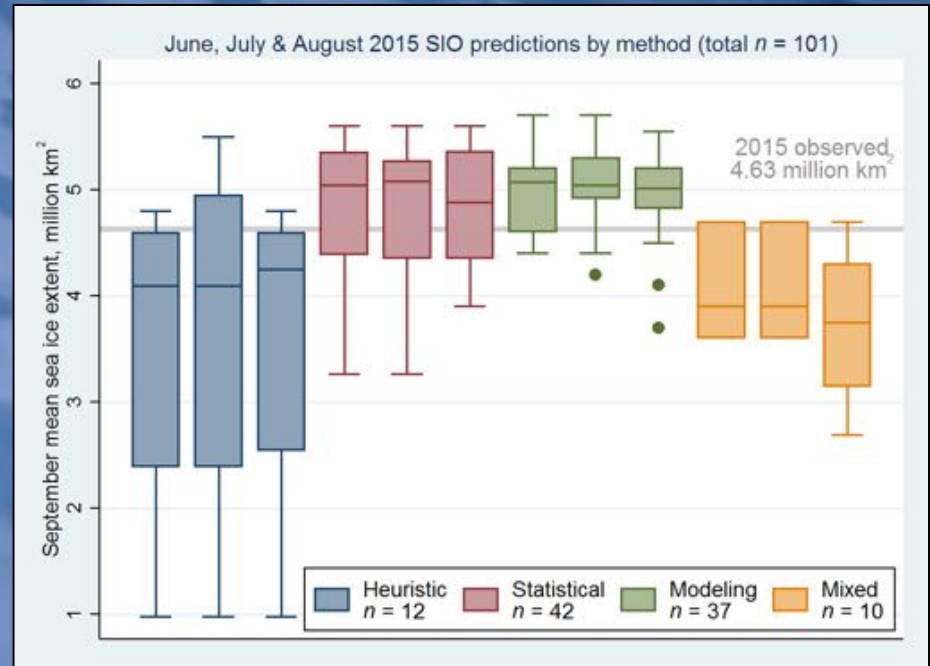
# *September Antarctic sea ice*

Which image is the record high year and which image is an average year?



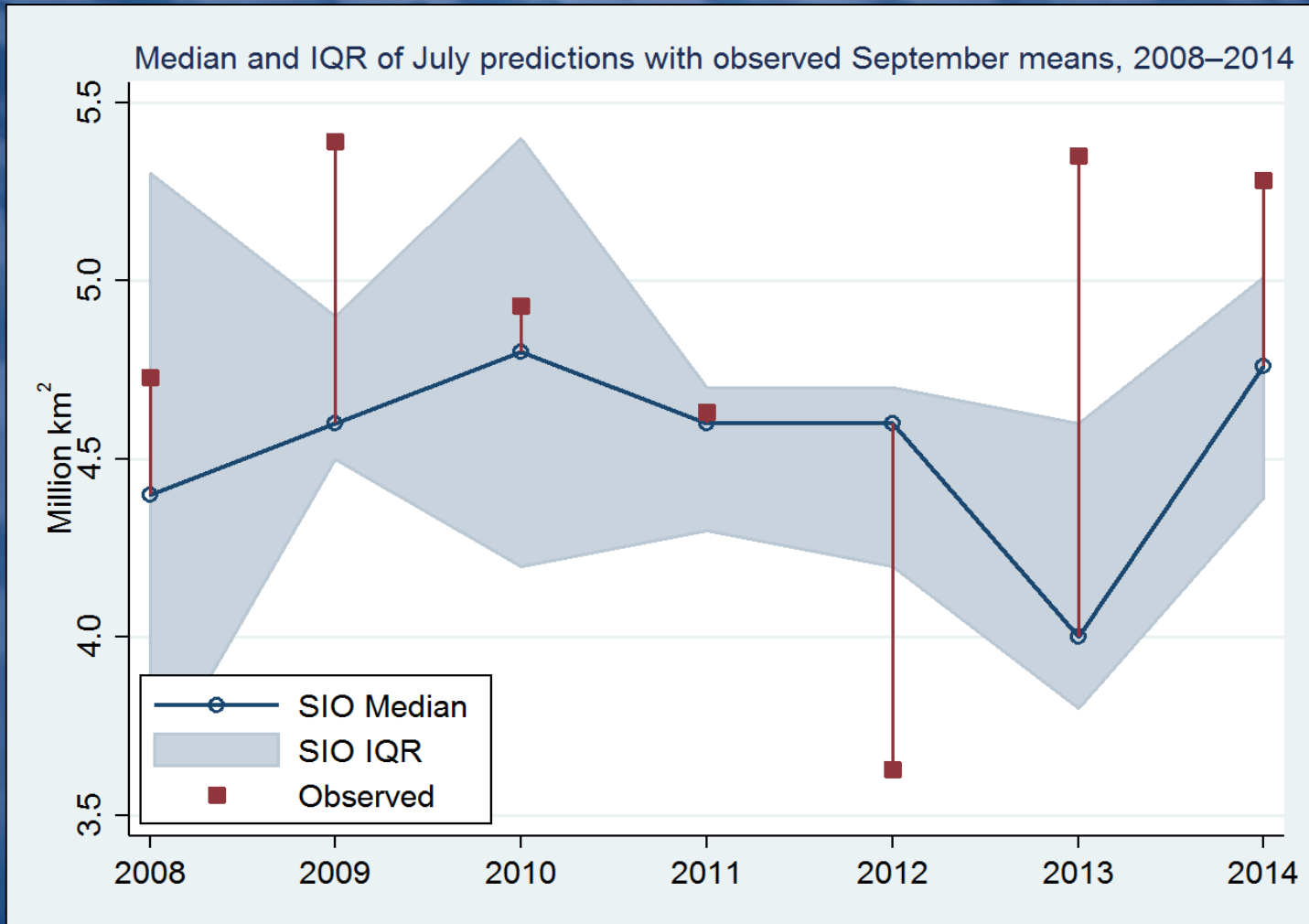
# Sea Ice Prediction Network (SIPN)

- NSF, ONR, DOE, NOAA, NASA funded
- Improve predictions of Arctic sea ice
- Facilitate better collaboration between researchers
- **Engage public on Arctic sea ice issues**
- Produce Sea Ice Outlook each year



<https://www.arcus.org/sipn/sea-ice-outlook>

# Overall Prediction Results



Updated from Stroeve et al., Geophysical Research Letters, 2014